

# POS System Electronic Manuals



Rev.1.00.160923.E

This manual consists of system introduction, system installation, system use, system expansion and appendix A/B

# Contents

## Part 1. System Introduction

01. Safety Notices Before Installation or Use
02. System Introduction
03. General Specifications
04. Optional Specifications
05. Name and Function of each component (Front View)
06. Name and Function of each component (Rear view)
07. Name and Function of each component (I/O)

## Part 2. System Installation

01. Checking the Location for Installation
02. Before Connecting Peripherals
  - Interface cover remove
  - Cable arrange cover remove
03. Connecting DC power supply cable

## Part 3. System Utilization

01. Resistive Normal touch
02. Capacitive Touch Screen Use
03. POS Driver and Utility Introduction
04. Dual Monitor Usage
05. Dual Monitor Usage
06. How to control Direct I/O in order to use drawer

## Part 4. System Extension & Disassemble

01. Power Adaptor
02. VFD, 9.7" Dual Monitor
03. 15" Dual Monitor
04. MSR Module
05. HDD
06. Memory
07. Touch Panel & LCD

## Appendix A. BIOS Set Up

01. Understanding BIOS
  - Understanding BIOS Set up
02. Serial voltage change & Using Keyboard shortcut

## Appendix B. System Configuration

01. System Block Diagram
  - BAYTRAIL(N2807) System Block Diagram
  - BRASWELL(N3160) System Block Diagram
02. Main Chipset & Connector
  - BAYTRAIL(N2807) Main Chipset & Connector
  - BRASWELL(N3160) Main Chipset & Connector
03. Main Jumper Setting
  - BAYTRAIL(N2807) Main Jumper Setting
  - BRASWELL(N3160) Main Jumper Setting
04. IO Pin map
  - COM1/2 RS-232 Serial Port (DSUB9 MALE)
  - USB Port(TYPE A)
  - COM1 RS-422/485 Serial Port (DSUB9 MALE)
  - Cash Drawer Port(RJ11)
  - COM3 RS-232 Serial Port(RJ45)
  - LAN Port(RJ45)
  - Power Selection Switch for Cash Drawer
  - Parallel Port(D-SUB25 FEMALE)
05. Parts List
  - MAIN
  - MAIN FRONT
  - COVER REAR
  - STAND
  - V STAND
  - MSR(Domestic)
  - MSR
  - VFD
  - 9.7inch Dual Monitor
  - 15inch Dual Monitor

## Part 1. System Introduction

### 01. Safety Notices Before Installation or Use

Read these cautions to avoid damage or injury.



Cautions

**Keep rated voltage.**

The product can be damaged or burned by overvoltage.

**Do not use damaged components.**

The product may be damaged unless it is repaired at service center.

**Install the product in a clean and dry place.**

The product may not work properly in moist or dusty environments.

**Always copy important files.**

Always copy important files because data loss cannot be guaranteed by manufacturer.

**Turn off the system and Remove the power cable before the product is removed.**

You may get an electric shock.

**Do not use loose or damaged power cables.**

There may be electric shock or fire.

**Always connect power cable to a grounded 3-wire outlet.**

It prevents electric shock from electrical short.

**Install the product at a place with good ventilation.**

The product may be transformed or burned by overheating if air vent is blocked.

**Use power strips designed for computers.**

There may be fire caused by overvoltage.

**Use the cleaner which is only for computer.**

Do not use benzene, thinner and alcohol or the product may be damaged.

**Keep the product away from heaters.**

The product may be damaged, overheated or burned.

**Turn on the system after turning on peripheral device. Turn off peripheral device after turn off the system.**

The product may be damaged.

**Install the product in a safe, stable place.**

The product may be damaged or you may get injured if the product is dropped.

**Keep the product away from magnetic materials.**

The contents of HDD may be erased or the electronic components may be damaged.

**Carefully store or dispose of plastic packing material.**

It is dangerous if children put their head on it.

**Do not touch the power plug with a wet hand.**

You may get an electric shock.

**Do not touch modem, telephone line or exposed terminal during electrical storms.**

There may be electric shock or fire.

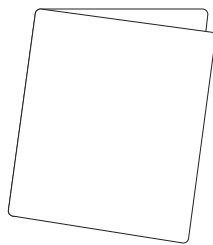
**Upgrade the system after shutting off the power of system and its peripheral device.**

The product may be damaged.

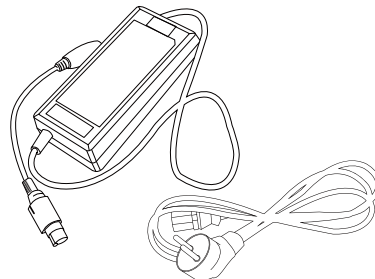
## Part 1. System Introduction

### 02. System Introduction

- The exterior design and specifications of product can be changed without prior notice in order to improve quality.



〈Quick manuals〉



〈Power cable/Adaptor〉

## Part 1. System Introduction

### 03. General Specifications

Processor	CPU : Intel Celeron N2807 1.58GHz(up to 2.16GHz) Without FAN Intel Celeron N3160 1.60GHz(up to 2.24GHz) Without FAN	
Chip sets	SOC	
Graphic	Integrated Intel HD Graphics	
Data storage device	SATA-III 2.5" HDD / SSD / mSATA SSD / M.2 SSD	
Memory	N2807 : DDR III SODIMM 1 Slot (Up to 4GB) N3160 : DDR III SODIMM 1 Slot (Up to 8GB)	
BIOS	AMI (America Megatrends Inc.) UEFI BIOS(Touch available in the BIOS)	
Display	Size : 15 (38.1cm) 1024 X 768 resolution LED LCD Support Colors : 16.2M Colors Contrast Ratio : 500:1 Backlight : 250cd/m <sup>2</sup> , 30,000 hours of product life(LED Type)	
Touch Panel	15inch 5 – Wire Resistive Type Interface : Serial(COM4) Transparency : 80% Surface Hardness : 3H Hitting Life : 35 million times	15inch True flat PCT(Projective Capacitive) Interface : USB Transparency : 80% over Surface Hardness : 3H over Hitting Life : 100 million times
OS	POSReady 7 / Windows 8.1 Industry Retail / Windows 10 IoT Enterprise .etc	
I/O Interface	COM(Serial) Port : D-SUB 9P x 2Ports / RJ-45 x 1Port 5V / 12V or RI outputs through COM 1, 2, 3(BIOS setup) PARALLEL Port : D-SUB 25P x 1Port USB Port N2807 : USB 2.0 back x 2Ports / IO x 4Ports N3160 : USB 2.0 back x 2Ports / IO면 x 2Ports USB 3.0 IO x 2Ports Ethernet Port : 10M / 100M / 1Gb LAN RJ-45 x 1Port VGA Port : D-SUB 15P x 1Port Audio Port : Line-out x 1Port DC-OUTPUT Port : 12V DC-OUT 2.5Φ x 1Port	
Booting device	HDD, SSD, mSATA(N2807 only), m.2(N3160 only), External CD/DVD-ROM, USB memory etc.	
Power supply	AC INPUT : AC 100~240V / 50~60Hz, 2A DC OUTPUT : 12V / 5.0A(60W)	
Dimensions	W x H x D : 379 x 264 x 362(mm)	
Weight	6.0Kg	

## Part 1. System Introduction

### 04. Optional Specifications

Magnetic Swipe Reader(MSR)	Read Track : ISO track 1, 2, 3 Interface : Internal USB Performance : 10~150 cm/sec Head Reliability : 500,000 times Error rate : Less than 0.5%
Parallel Port	D-SUB 25P x 1Port(Factory Option)
Customer Display	VFD : 5 x 7 Dot 20 x 2 Character type Graphic type 256 x 32 LCD : 9.7"(24.6cm) 1024 X 768 4:3 type 15"(38.1cm) 1024 X 768 4:3 type
Wall Mount	The device for attaching POS system on the wall

## Part 1. System Introduction

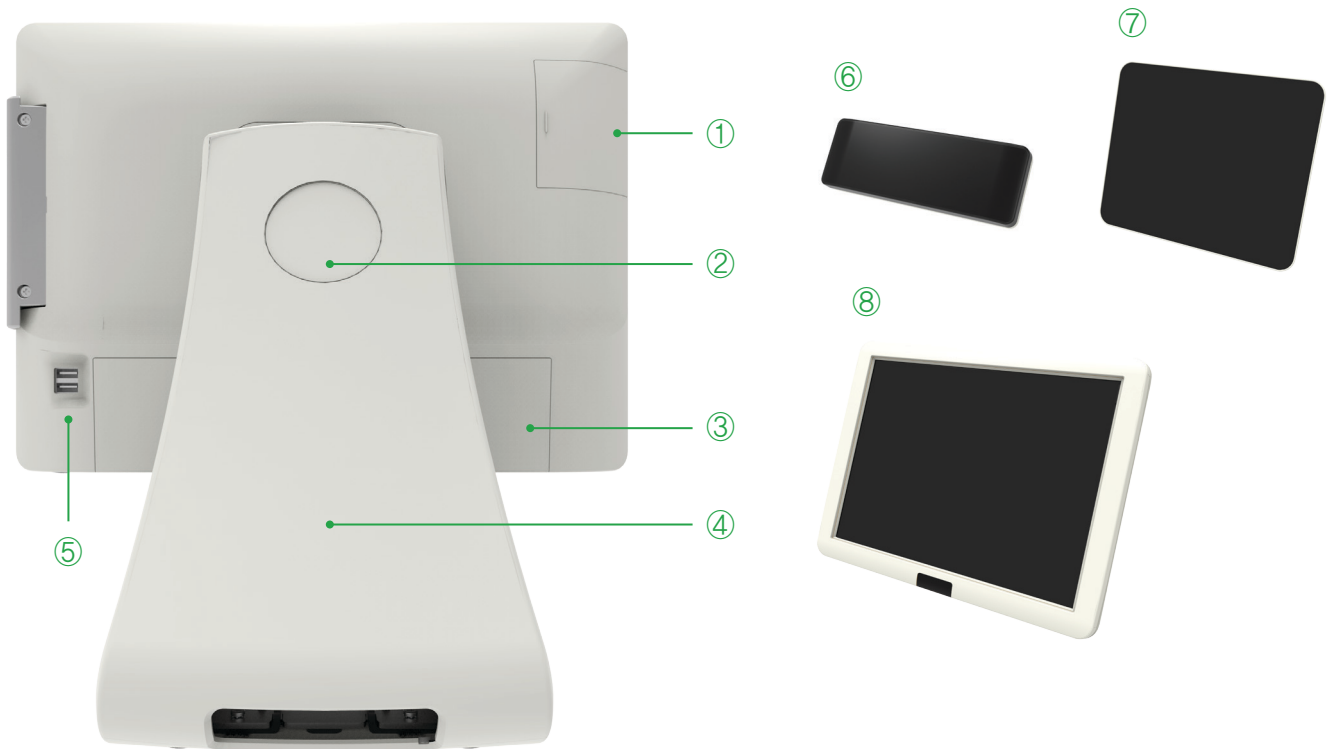
### 05. Name and Function of each component (Front View)



1. Credit card recognition lamp : When the card reader recognizes a credit card, the light is on.
2. Payment module (option) : MSR can be used.
3. Indicating lamp & Power button : The light is on when the system is on.
4. Stand

## Part 1. System Introduction

### 06. Name and Function of each component (Rear view)

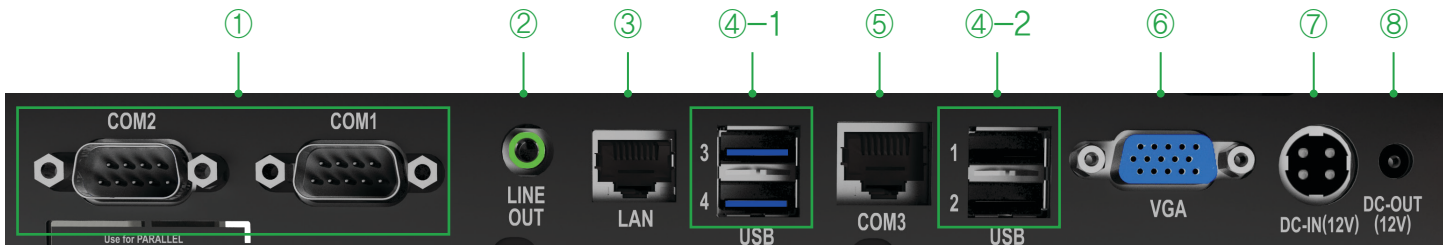


1. HDD Slot : You can connect 2.5" HDD or SSD
2. Integrated customer display cover: Remove this cover, you can install the all-in-one customer display.
3. Interface cover : Remove this cover, you can install the peripheral device.
4. Dummy for cable arrangement : Remove this cover, you can arrange cables of device.
5. USB Port : USB Devices can be used through this port, i.e. USB scanner, USB Keyboard, USB Printer, etc.
6. VFD (all-in-one customer display) – option
7. 9.7inch Display (all-in-one customer display) – option
8. 15inch Display (all-in-one customer display) – option



## Part 1. System Introduction

### 07. Name and Function of each component (I/O)



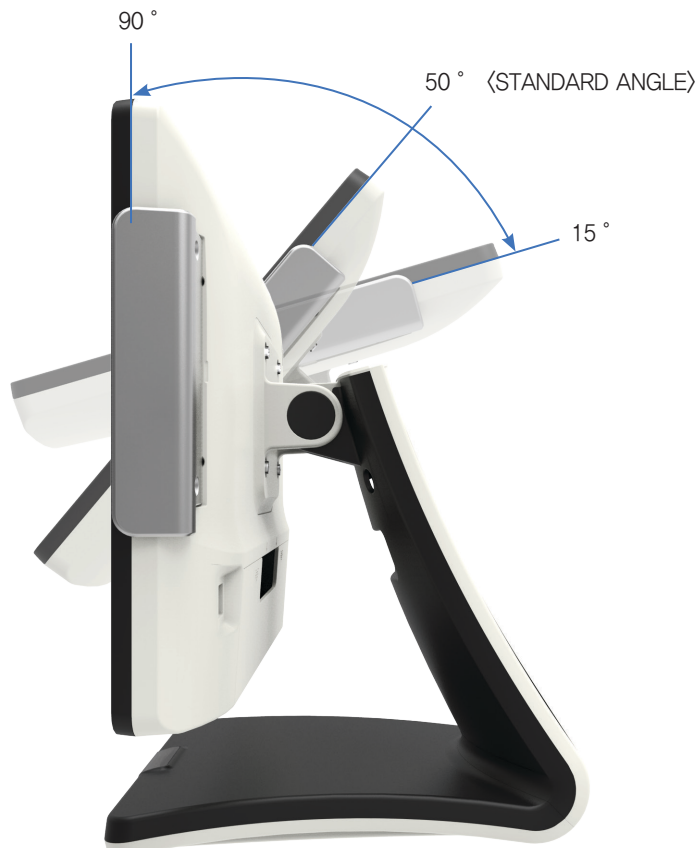
1. D-SUB 9pin COM (Serial) port : You can connect serial devices such as barcode scanners, printers.
2. Audio port (Line-out) : You can connect the external speakers.
3. RJ-45 LAN (ETHERNET) port : You can connect RJ45 cable for 100/1000 Mbps Ethernet connection.
4. USB 2.0 port : You can be used to connect devices such as the USB scanner, USB keyboard, USB printer.  
4-1, Braswell(N3160) system supports USB 3.0.
5. RJ-45 8pin COM(Serial) Port : You can connect serial devices such as barcode scanners, printers.
6. D-SUB 15pin VGA port : You can connect the external monitor.
7. 12V DC Input (Input power connection) : Jack is connected to the adapter to supply power to the system.
8. 2.5Φ 12V DC Output(for Rear display) : System connected to an external DC power cable to the power that can be an output jack.
9. RJ-11 6pin Cash Drawer port : You can connect the cash drawer.
10. Setting switch of Cash drawer voltage (Option) : You can switch the power (12V/24V) for a cash drawer.
11. This is location of the label rating of the product.

## Part 2. System Installation

### 01. Checking the Location for Installation

It is important to choose a safe and secure place to install the terminal.

- Choose a desk or table big and strong enough to support the weight of the system and peripherals.
- Choose a flat, hard surface. Carpeted area can generate static electricity that can alter memory or damage system components.
- Make sure a system installed in a well-ventilated place and keep the space free around the system.
- Choose appropriate environmental conditions such as cool and dry places. Avoid humid and dusty places. Also avoid direct sunlight, rapidly changing temperatures, or placing the system near heat sources.
- Select the appropriate voltage. Connect all the equipment into an isolated outlet to prevent static electricity and short circuit.
- Where sufficient power outlets are available for printers and other peripheral devices.
- Do not install near electromagnetic and electrical devices, such as phones and electric motors, that can cause system damage.
- The socket-outlet shall be installed near the equipment and shall be easily accessible.



Note

Adjust the system depending on the condition and use it with the exact angle.  
Adjustable angle shown in the figure.



Cautions

- Use the same battery for the product (motherboard) to prevent a risk of explosion.
- Dispose of used battery according to the separate instruction.

## Part 2. System Installation

### 02. Before Connecting Peripherals

To connect peripherals first remove the 'Interface cover', which is in the bottom of the system, after that remove the 'Cable arrange cover' which is in the rear of the system.

#### • Interface cover remove

1. As it shown in the picture pull the 'Interface cover' in the direction of the arrow.

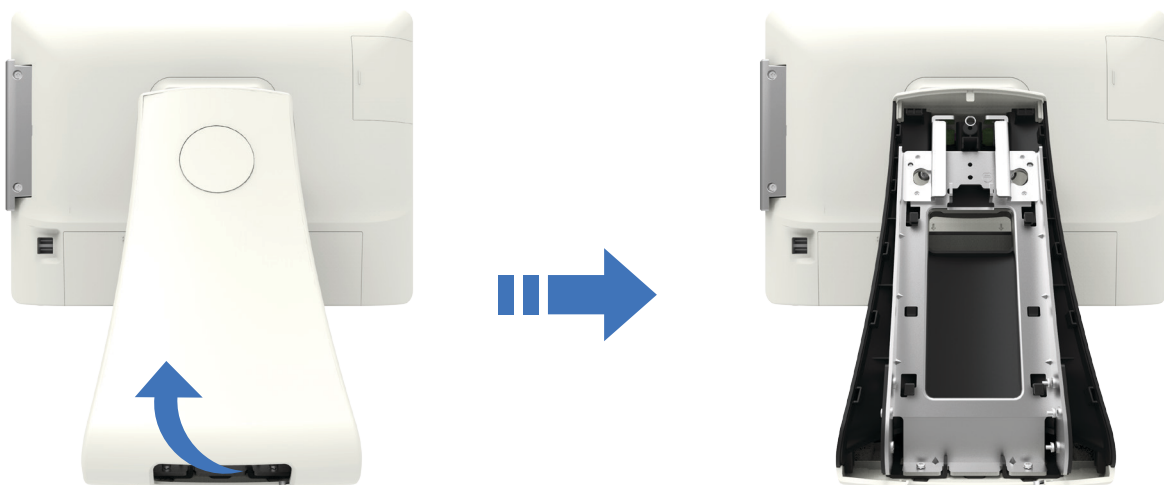


- Turn off the power of the body and connect peripherals.
- Connecting peripherals to the corners parts of the system can cause hands injury. For your safety use the gloves.



#### • Cable arrange cover remove

1. Remove the 'Cable arrange cover' in the direction of arrow shown in below picture.



## Part 2. System Installation

### 03. Connecting DC power supply cable

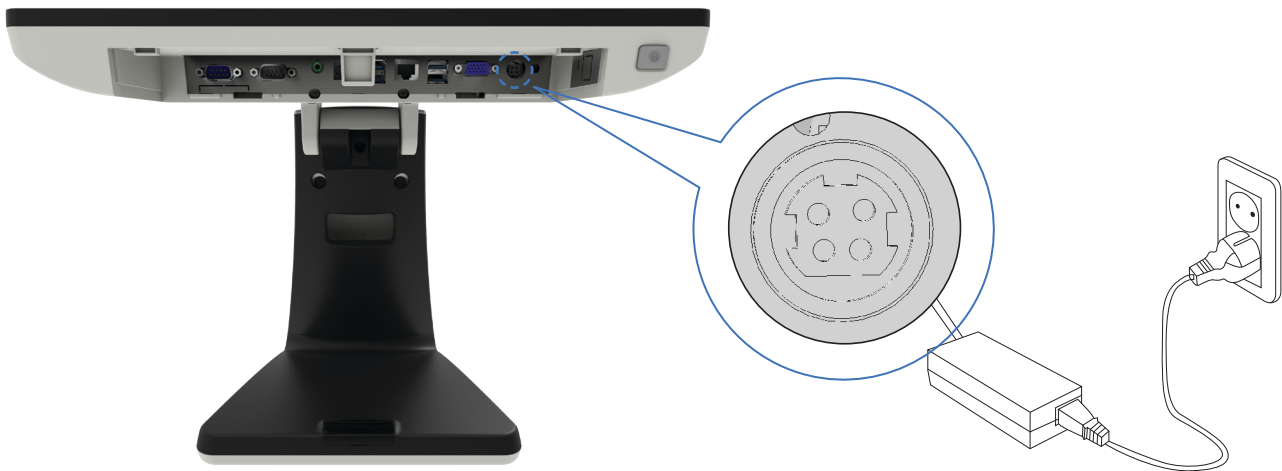
Connect the DC power cable to the DC power input connector at the bottom of the system.

(Adapter 100V - 220V free voltage of the system can be used.)



Cautions

- Only manufacturer adapter should be used for this system.
- Manufacturer wont take responsibility for damages caused by using products which not made by manufacturer.

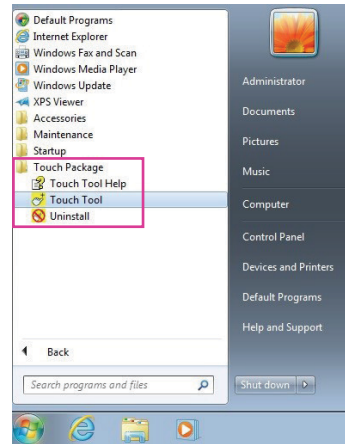


## Part 3. System Utilization

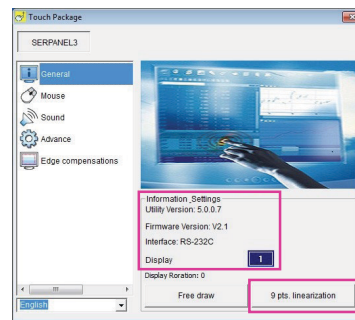
### 01. Resistive Normal touch

Please recalibrate if it is not accurate on touch points.

1. Click on Windows Start button and from All Programs, click on Touch Tool from Touch Package.



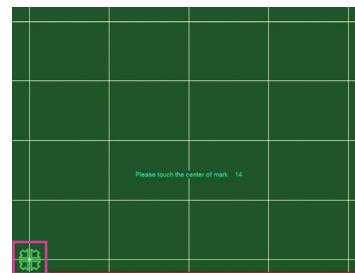
2. When you confirm the connected device form the Information Settings of Touch Package, click on 9 pts. linearization on lower right corner.



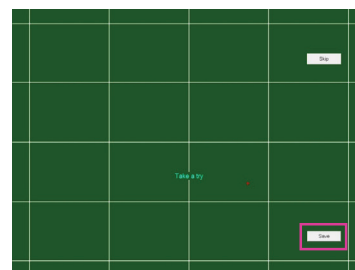
Cautions

- Ball point pens or sharp tools may damage the surface of the touch screen.

3. Proceed coordinate adjustment by touching on points indicated by the arrows for two seconds.



4. After completing coordinate adjustment, it will show 'Skip' and 'Save' button. Once you click on 'Save,' the adjusted coordinate will be saved. (If you wish to re-do coordinate adjustment, click on 'Skip.')




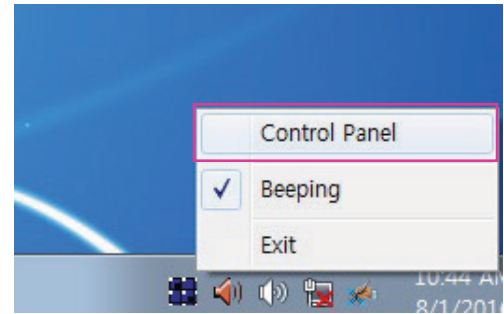
- When using touch screen as dual monitor, if setting of the dual monitor is selected as 'Extended Monitor,' it can be used without additional coordinate adjustment for the touch screen. Also, while using it as 'Extended Monitor,' if the setting is changed to 'LVDS only' additional coordinate adjustment for the touch screen is also not necessary.

## Part 3. System Use

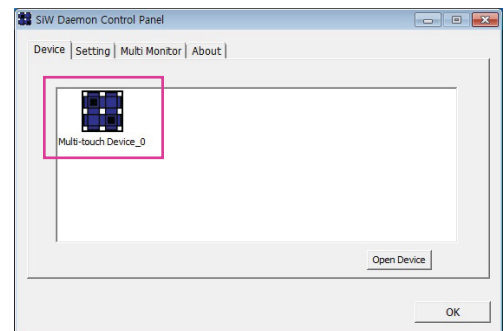
### 02. Capacitive Touch Screen Use

During the use of touch screen, when the accuracy becomes an issue, please re-do coordination adjustment.

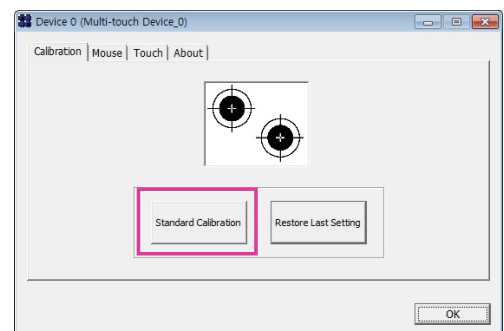
1. Right click on the  icon located at the lower right corner of menu and click on Control Panel.



2. Double click on the icon from Multi-touch Device\_0 of SiW Daemon Control Panel.



3. Click on Standard Calibration button to proceed coordination adjustment. If you wish to restore to previously saved set value, click on Restore Last Setting button.



## Part 3. System Use

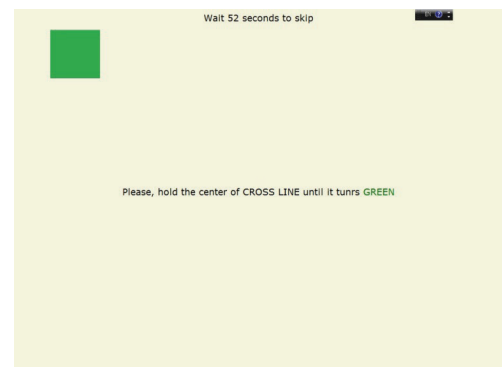
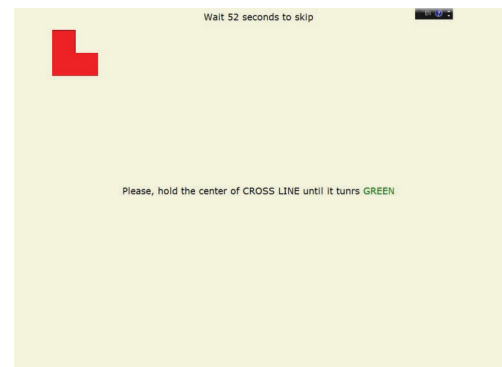
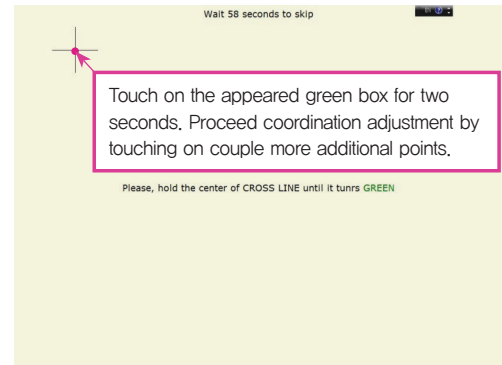
### 02. Capacitive Touch Screen Use



Cautions

- Ball point pens or sharp tools may damage the surface of the touch screen.

4. Proceed coordination adjustment by clicking Standard Calibration button.

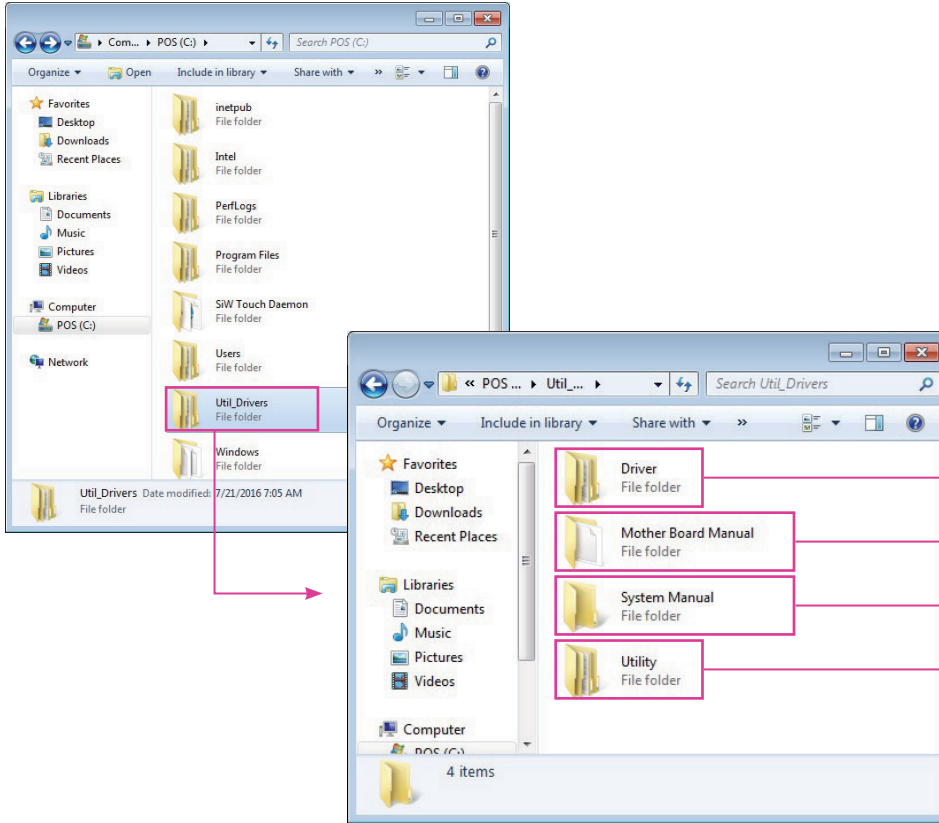


5. When the coordination adjustment is complete, above window will close.

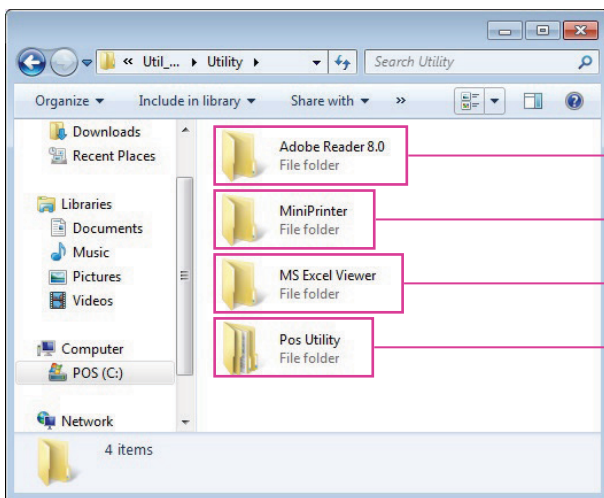
# Part 3. System Utilization

## 03. POS Driver and Utility Introduction

1. POS Drivers & Other utilities are located in hard disk drive.(C:\Util\_Driver)



- System Driver files are in this folder.
- Mother Board manual is in this folder.
- System manual is in this folder.
- Utility are in this folder.

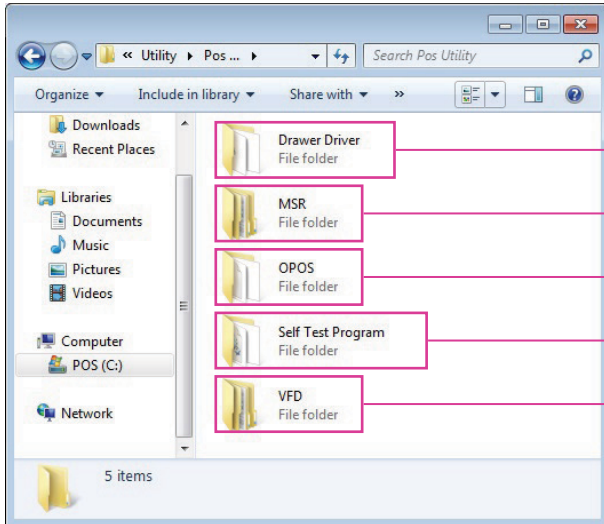


- Adobe Reader is in this folder.
- Windows install driver of ELLIX series is in this folder.
- MS Excel Viewer is in this folder.
- POS Utility is in this folder.



## Part 3. System Utilization

### 03. POS Driver and Utility Introduction



Cash Drawer install driver is in this folder.

MSR Setup Utility is in this folder.

OPOS install driver is in this folder.

Self test program for dealer is in this folder.

VFD utility is in this folder.

- OPOS consisted of an architecture for win32-based POS device access.
- The current OPOS driver has been developed in accordance with OPOS Specification Version 1.10 and will be continued to support the upper version of OPOS Specification.
- Support OS : POSReady 2009, Win XP Pro, POSReady 7, Win 7 Pro, Win 8.1, Industry 8.1, Win 10

#### The location of installation file

- The file is located on the hard disk. (C:\Util\_Driver\Utility\Pos Utility\OPOS)

#### The installation method

- Execute 'xxxxOPOSSET\_RVx.xx.exe' file in OPOS folder.
- All components will be automatically registered & set up according to the system configuration.

#### Support Peripherals (The model name written on the bottom of the product)

- LineDisplay (Customer Display) : Q202LD
- Cash Drawer (Cash Drawer) : DRN2807
- POSPrinter (Printer) : ELLIX Series

## Part 3. System Utilization

### 04. Dual Monitor Usage

Additional monitor can be connected to the VGA connector. This content is written based on Windows 7.

- **Dual Monitor usage**

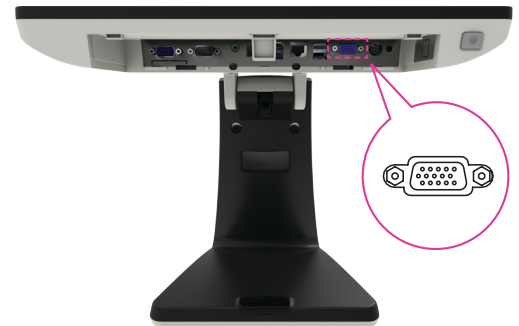
The system supports dual monitor system, which is using two monitors for one system. Sub-monitor's screen can be displayed as a duplication of the main monitor or as an extended screen. (Windows desktop)

1. Connect the external monitor when the system is off.

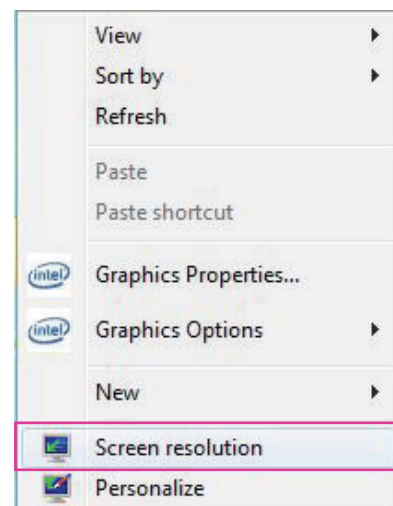
(Remove the 'Interface cover' at the rear bottom of the system and you will see a VGA connector.)

- ① Connect the external monitor when the system is off.
- ② Connect a power cable to external monitor

2. Press a power button of the system and the external monitor.



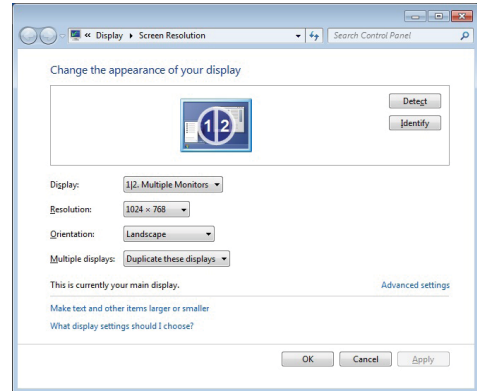
3. Click the right button of mouse on Windows desktop screen and select 'Screen resolution' from a popup menu.



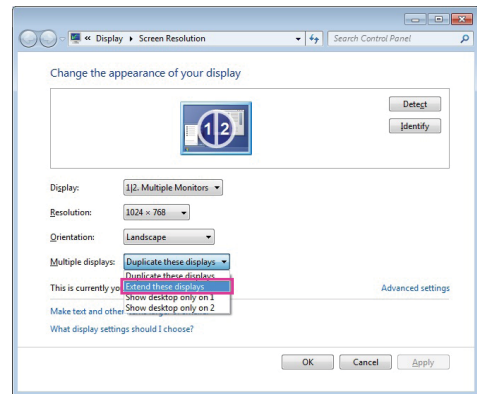
## Part 3. System Utilization

### 04. Dual Monitor Usage

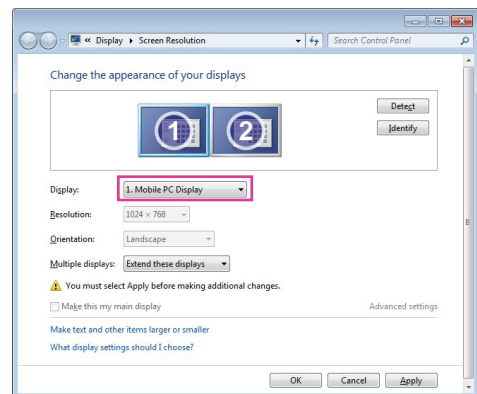
4. On The following dialog window 'Change display appearance of your display' 'Display' option is set as '1|2. Multiple Monitor' and 'Multiple displays' (M) option is set as duplicate these displays. (In this case, the dual monitor shows a duplicated screen.)



5. If you want to change to an extended screen, set 'Multiple displays' option as 'Extend these displays' on 'Change the appearance' of you display dialog window. (In this case, two different extended screen monitors are shown.)



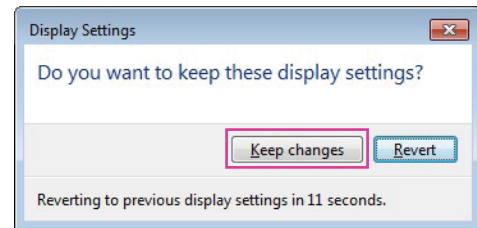
6. Set 'Display' option as '1. Digital Flat Panel (1024x768 60 Hz)' and click <Apply> button.



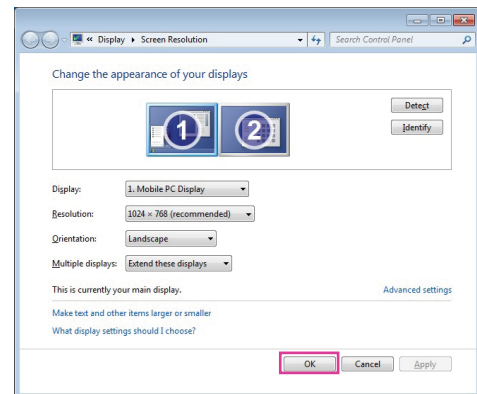
## Part 3. System Utilization

### 04. Dual Monitor Usage

7. Select <Keep changes> button on 'Display Settings' dialog to keep the current settings.



8. If the configuration is finished, click <OK> button to close the 'Change the appearance of your displays' dialog window.



## Part 3. System Utilization

### 05. Dual Monitor Usage



Note

• **How to check dual monitor's settings**

If dual monitors don't work properly, refer to the following procedure.

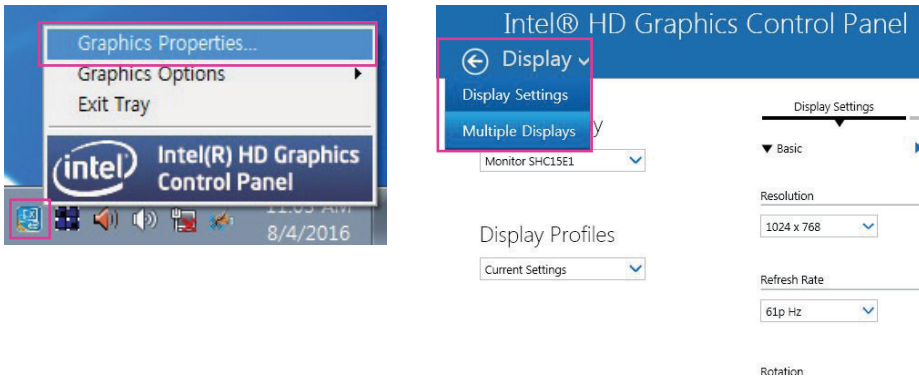
• **Method 1**

Check the BIOS setup. Make sure that 'Chipset ► North Bridge ► LCD Control ► Boot Display Device' menu is selected as 'LVDS'.

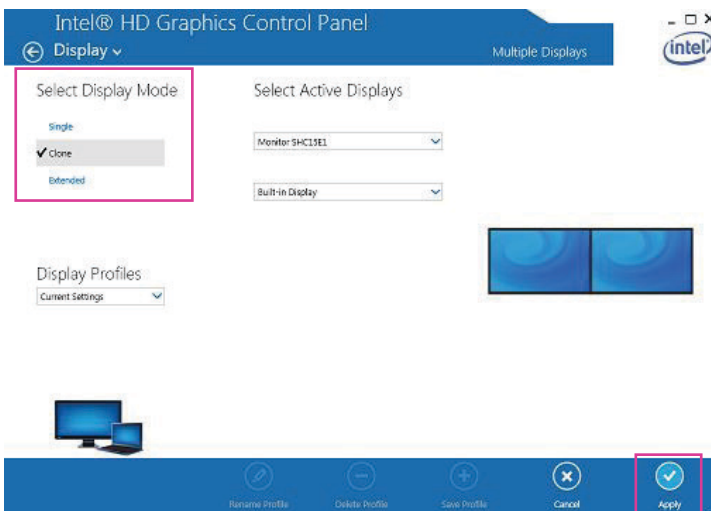
• **Method 2**

Click the right button of mouse on 'Intel Graphic icon' of Windows tray area and select 'Graphic Properties' menu.

Select '**Multiple Displays**' menu.



Make sure that '**Select Display Mode**' is set as '**Extended**'.



## Part 3. System Utilization

### 06. How to control Direct I/O in order to use drawer

Hardware I/O Port Number to Open/close Drawer : "0xA07"

Value (byte) needed to 'Open the drawer 1' : 0xF7

Value (byte) needed to 'Close the drawer 1' : 0x08

Value (byte) needed to 'Open the drawer 2' : 0xFE

Value (byte) needed to 'Close the drawer 2' : 0x01

## Part 4. System Extension & Disassemble

### 01. Power Adaptor

1. Confirm that the power of peripherals and systems are turned off.
2. Pull the interface cover located at the bottom of the system in the direction of the arrow to disassemble the interface cover.



3. Disconnect the DC power supply and other cable of peripherals.



Cautions

- Caution when disconnecting DC power supply.

The neck part of the power jack must be removed pulled before disassembly.

## Part 4. System Extension & Disassemble

### 02. VFD, 9.7" Dual Monitor

※ Assemble & Disassemble structure is same for VFD, 9.7" dual monitor.

1. Disassemble interface cover and cable cover as you see in below picture.



2. Press on the hook as you see in below picture to disassemble display dummy.

3. On the cable cover, assemble mount dummy using one screw.

4. Pass VGA and power cable through the mount dummy hole and assemble dual monitor on cable cover using two screws.

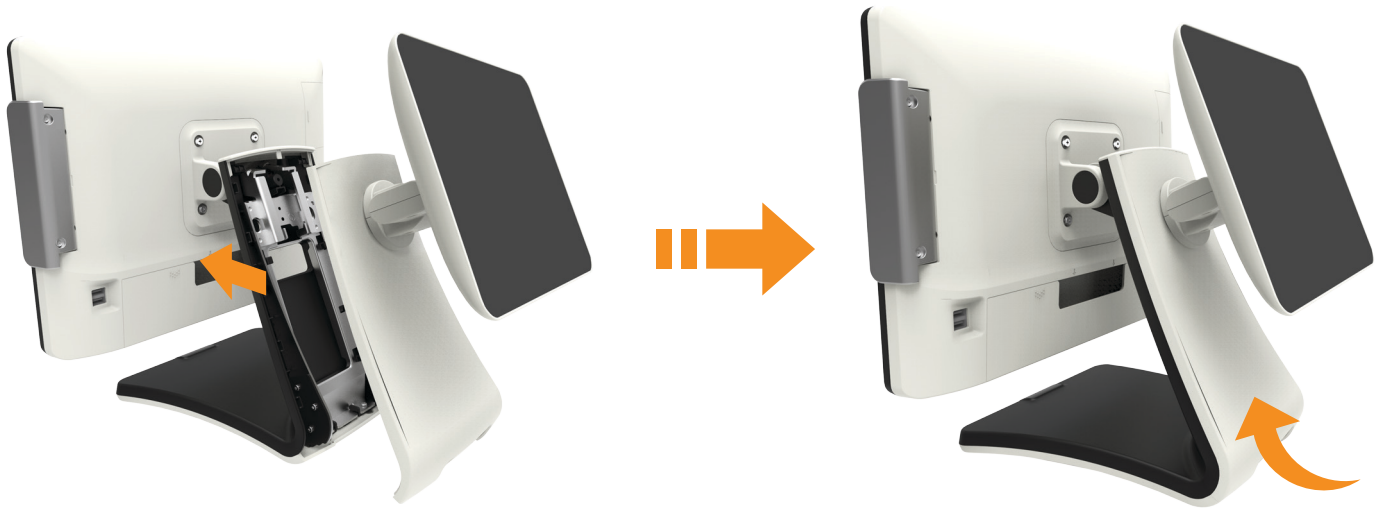




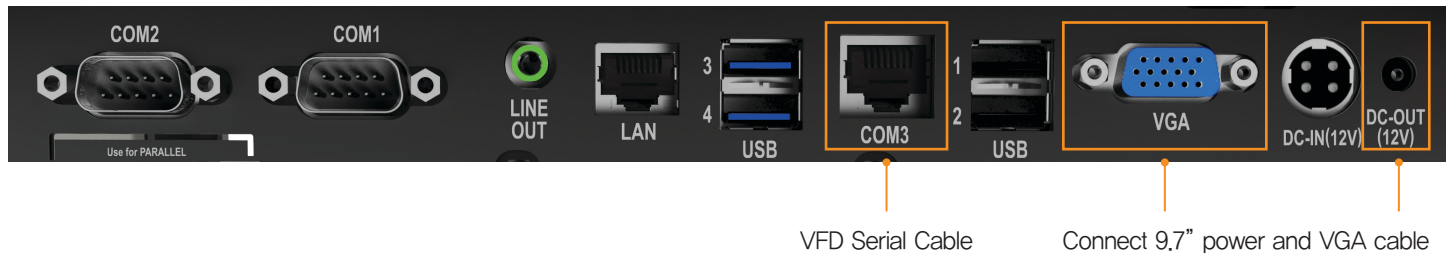
## Part 4. System Extension & Disassemble

### 02. VFD, 9.7" Dual Monitor

5. Pass VGA and power cable through hole in the stand and assemble dual monitor assembled on cable cover.



6. Connect VFD cable on COM3 and 9.7" cable on DC-OUT and VGA Port and assemble the interface cover.



VFD



9.7" Dual Monitor

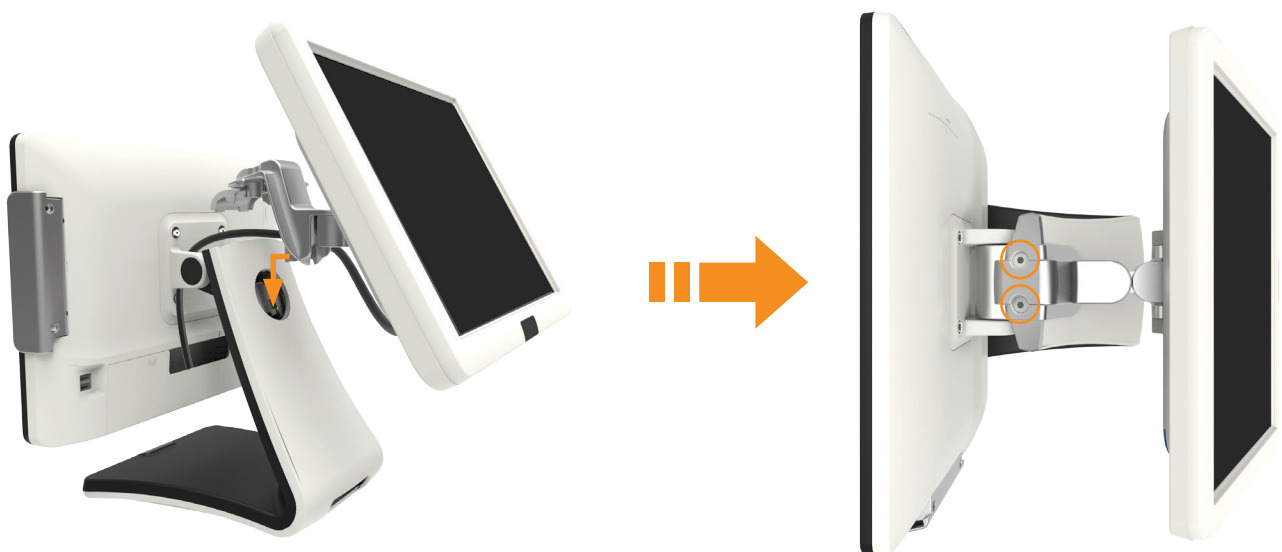
## Part 4. System Extension & Disassemble

### 03. 15" Dual Monitor

1. Proceed until No. 2 of page 24.
2. Disassemble cover on the top of the stand and reassemble cable cover.
3. Locate both VGA and Power cable through stand and display as shown in below picture.



4. Assemble dual monitor as below picture and fix it with two screw.



## Part 4. System Extension & Disassemble

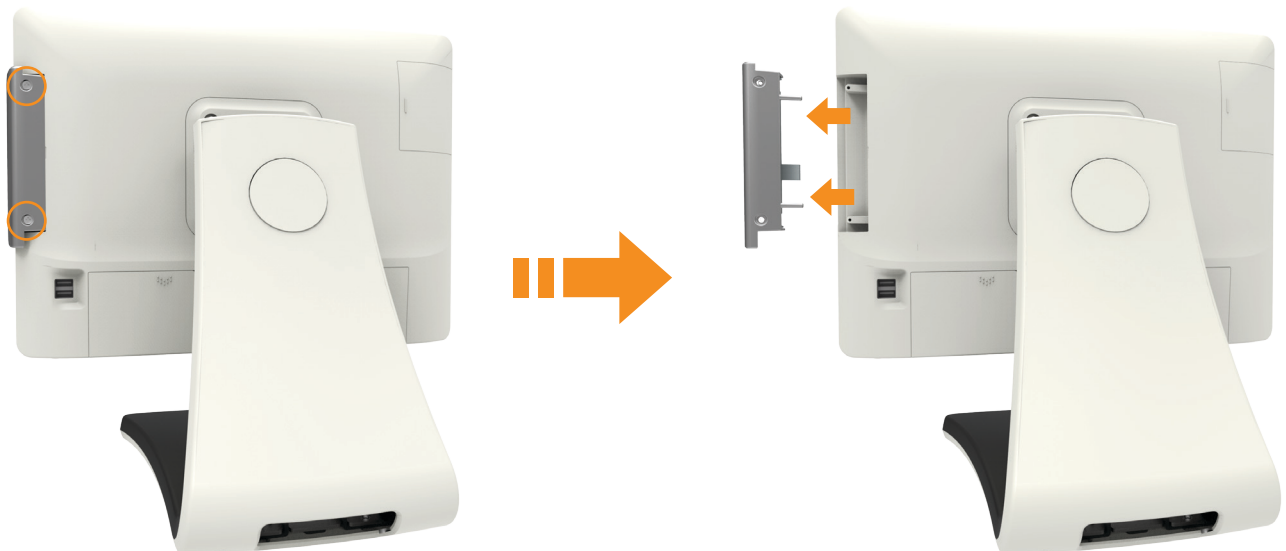
### 03. 15" Dual Monitor

5. Refer to No. 6 of page 25 and connect VGA and power cable and assemble the interface cover.



### 04. MSR Module

1. Unscrew two screws on the back side of MSR and disassemble from the POS.



## Part 4. System Extension & Disassemble

### 05. HDD

1. Turn off the POS system for HDD change.
2. Push the HDD cover in the direction of arrow shown below and disassemble HDD cover.
3. Unscrew the screw and pull the HDD to disassemble.



- **HDD assemble and confirmation of it working**

1. Assemble the HDD following the above direction in reverse order and connect the peripheral and DC power cable.
2. Press the power button to start the system and check the newly installed HDD is properly connected.

## Part 4. System Extension & Disassemble

### 06. Memory

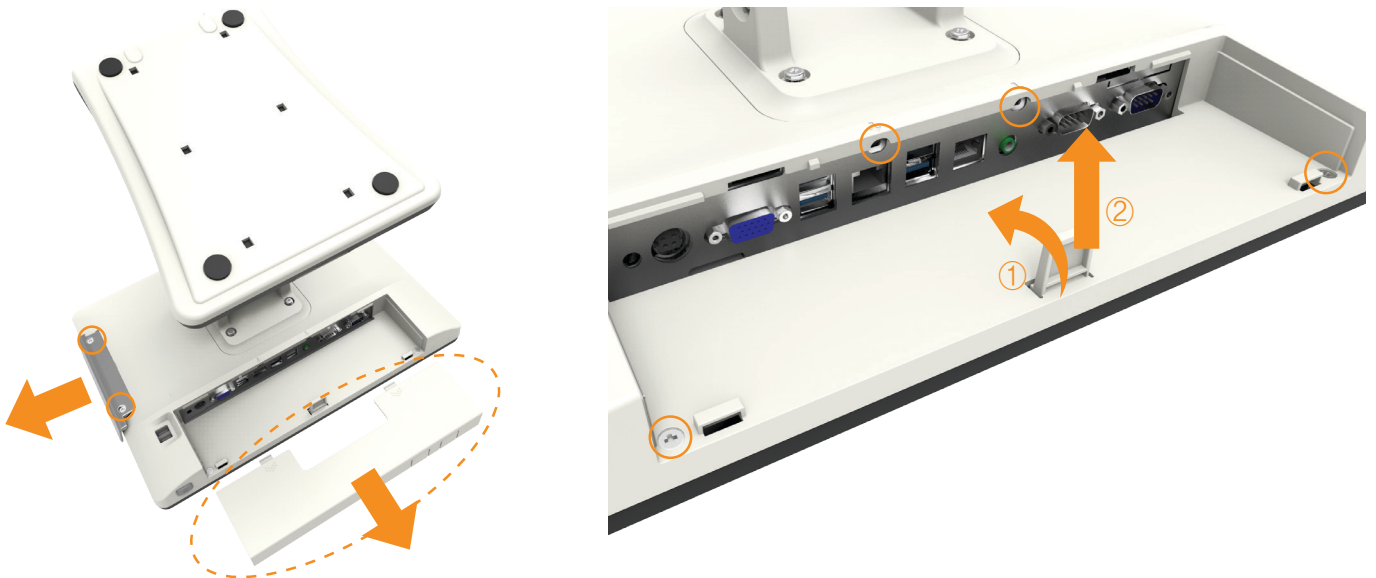
There are times when the main memory capacity needs to be increased.

The standard of currently connected memory and new memory needs to be figured out.

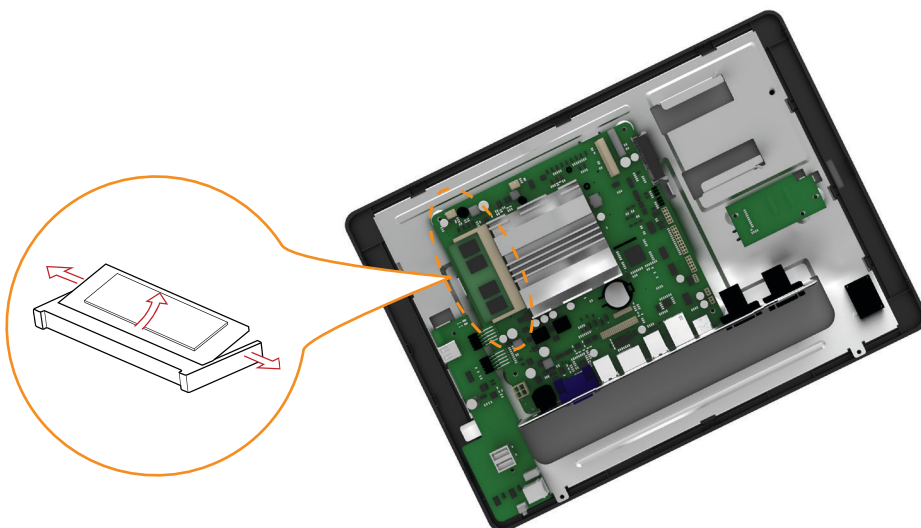
The maximum memory capacity for Baytrail (N2807) is 4 GB and 8 GB for Braswell (N3160).

When memory is installed, the BIOS will automatically realize the type, capacity and speed of the memory.

1. To increase the main memory, turn the system off.
  - Before disassembling the system the power and peripheral cables must be disconnected.
2. Turn the system so that the stand is facing up and unscrew two screws on the back of MSR and disassemble the module. After removing interface cover, unscrew four screws and to relieve hook, push in the direction of arrow ① and to disassemble motherboard protection cover, pull in the direction of arrow ②.



3. Pull the lever on the both side as shown in the below picture and disassemble the memory.



## Part 4. System Extension & Disassemble

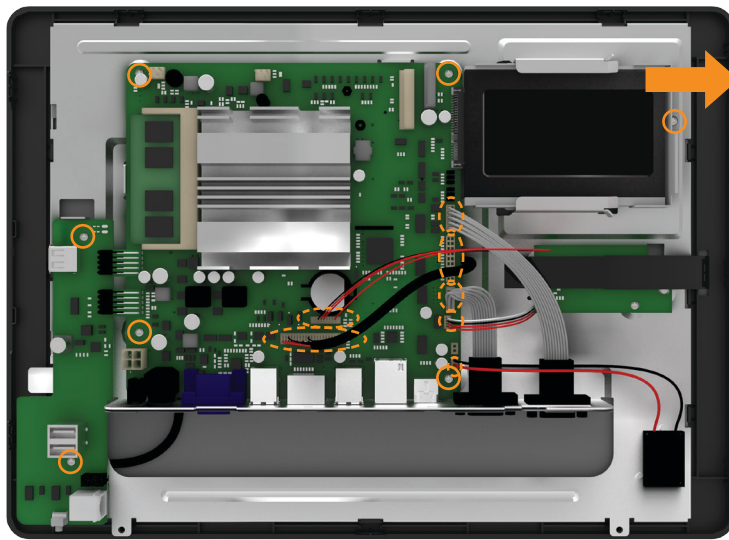
### 07. Touch Panel & LCD



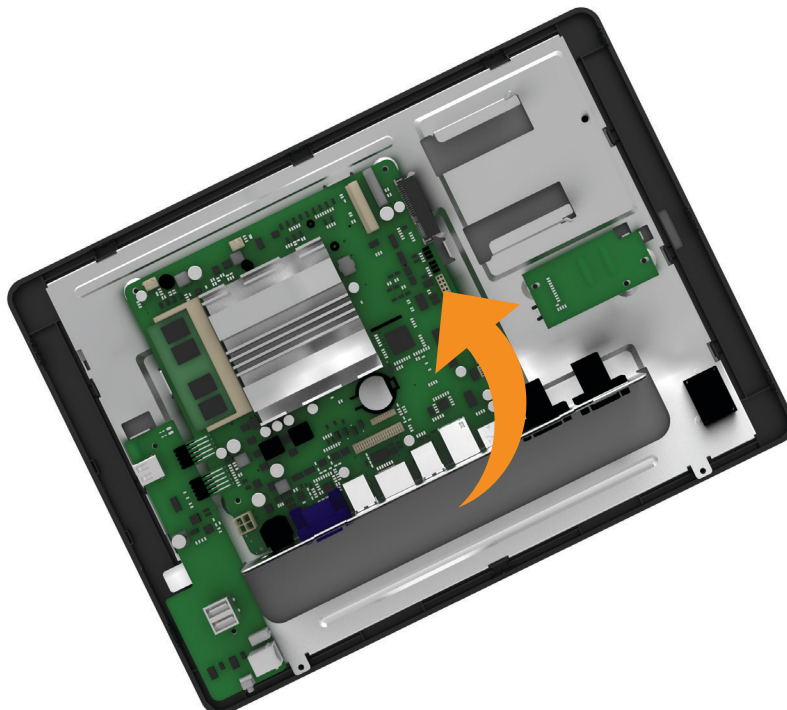
Cautions

- During disassemble of LCD or Touch Panel, due to foreign substance or carelessness, it could be damaged. Please be assisted from the service center that we certify.

1. Proceed up to No. 2 of 06. Memory and disassemble the touch cable and other seven cables. Then, unscrew seven screws and pull the HDD in the direction of the arrow.



2. Disassemble the motherboard by pulling it in the direction of arrow as below picture.

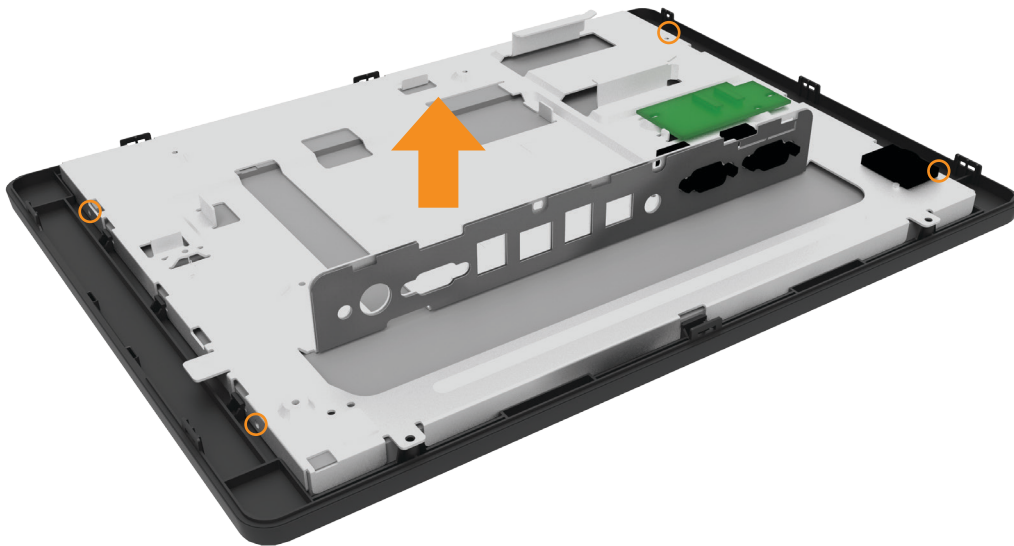


## Part 4. System Extension & Disassemble

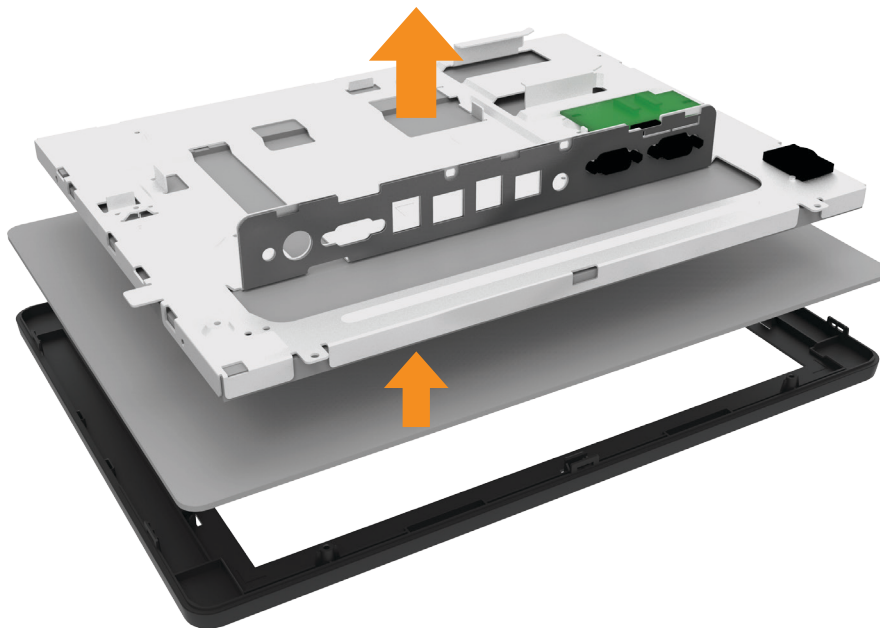
### 07. Touch Panel & LCD

3. Disassemble four screws located on the side of display bracket.

4. Lift up the display bracket to separate it from LCD.



5. Disassemble display and touch panel.



Cautions

- Please be cautious to prevent cables from being damaged during the process.
- Due to pressure between touch panel and LCD, the touch panel could suddenly fall from LCD.
- Please be cautious to prevent from any kind of damage.
- After disassemble, be cautious to prevent foreign substance to get on LCD or touch part of the monitor or have external damage.

## Appendix A. BIOS Set Up

### 01. Understanding BIOS

#### • Understanding BIOS Set up

BIOS provides configuration and set up information for driving the main board. BIOS values are saved in CMOS ROM on the main board. BIOS(Basic Input and Output System) Setup is a menu-oriented software utility which enables a user to configure the system's environmental set up, system hardware, power saving functions, etc. BIOS Set up values can seriously affect how the system works. Therefore, users should determine all options regarding BIOS Set up and configure the system accordingly.

#### Entering the Setup

- Turn on the system and the system will show Press <DEL> to enter SETUP message.
- When this message show up, press <DEL> or <Delete> key to enter SETUP screen. (Touch the 'Setup' message)



#### Cases of BIOS Setup

- When checking HDD type and capacity after HDD replacement
- When changing booting sequence
- When reflecting user's need on the setup
- When setting or changing a password



# Appendix A. BIOS Set Up

## 02. Serial voltage change & Using Keyboard shortcut

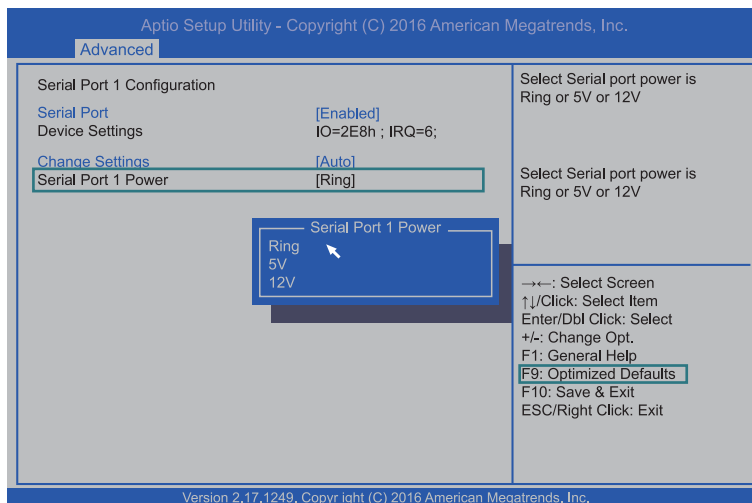
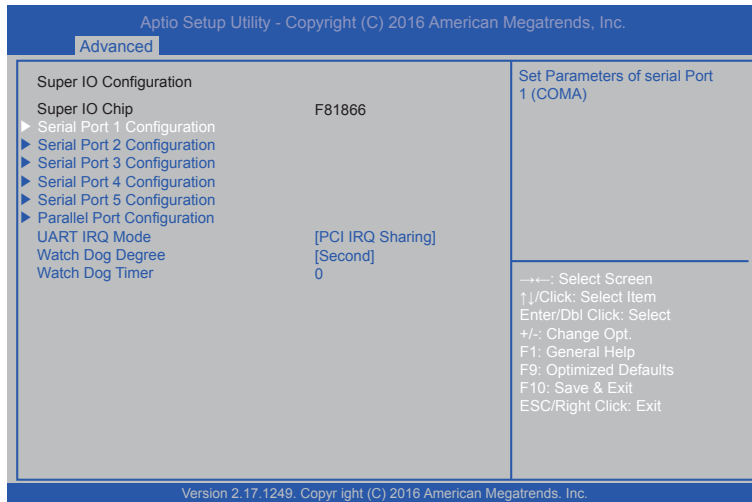
### 1. Advanced Menu

Use this menu to set up for system performance.

- Advanced > Super IO Configuration > Serial Port 1/2/3 Configuration > Serial Port 1/2/3 Power
  - : This item allows you to set the output voltage value of Serial port 1/2 PIN9 type
  - This item allows you to set the output voltage value of Serial port 3 PIN1 type

### 2. Using keyboard shortcut

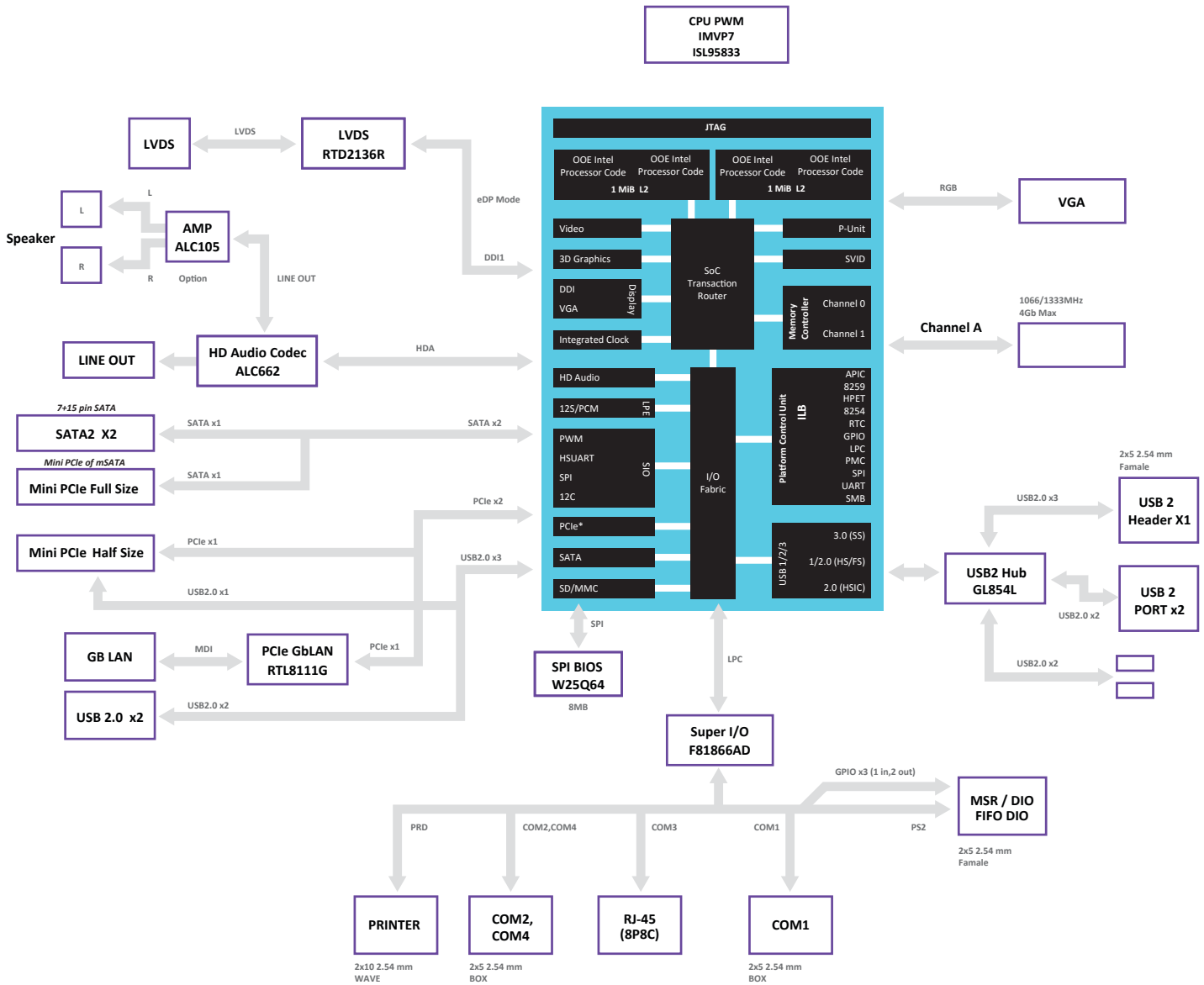
- Press key 'F9' on the keyboard, it is initialized.



# Appendix B. System Configuration

## 01. System Block Diagram

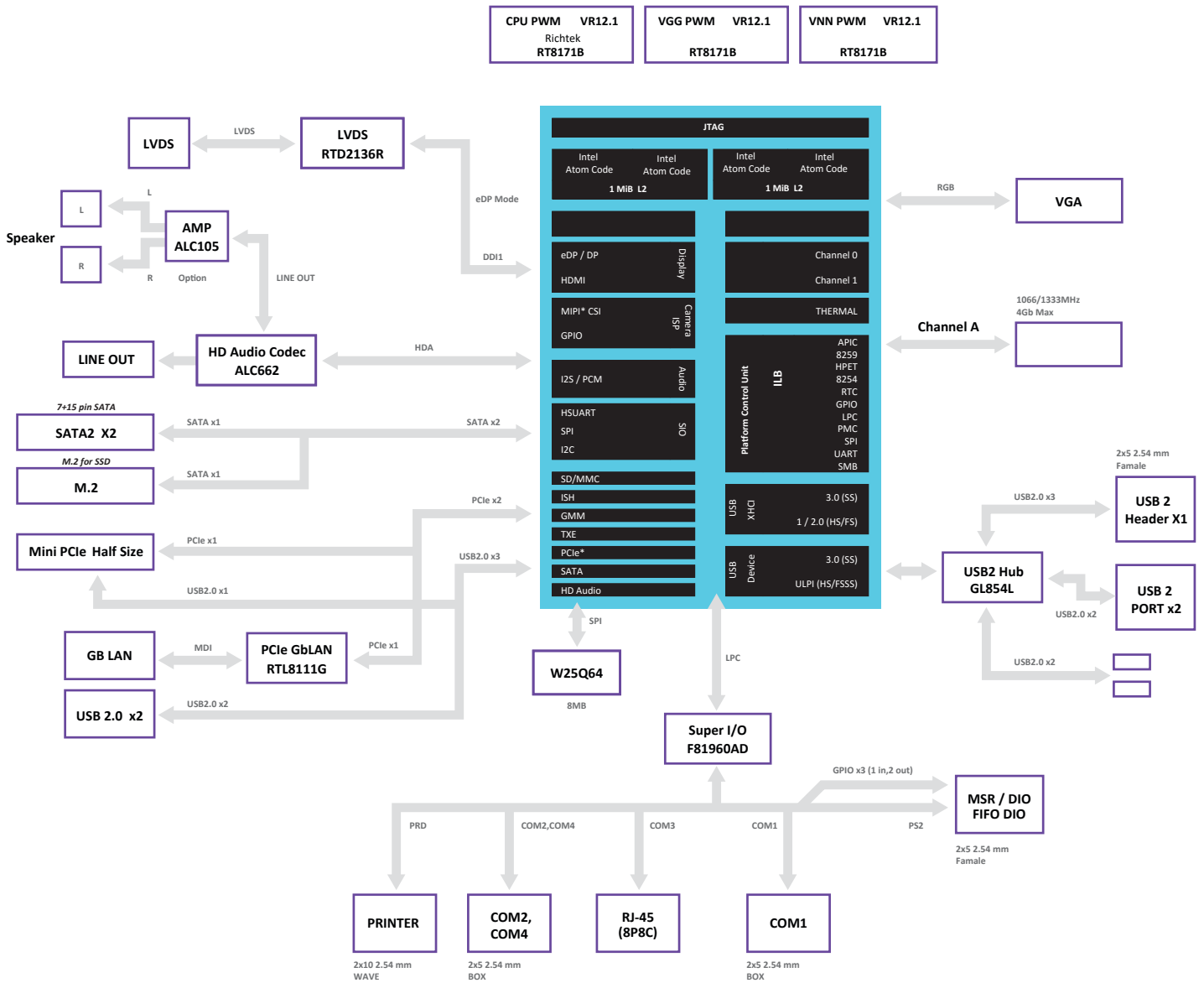
- BAYTRAIL(N2807) System Block Diagram



# Appendix B. System Configuration

## 01. System Block Diagram

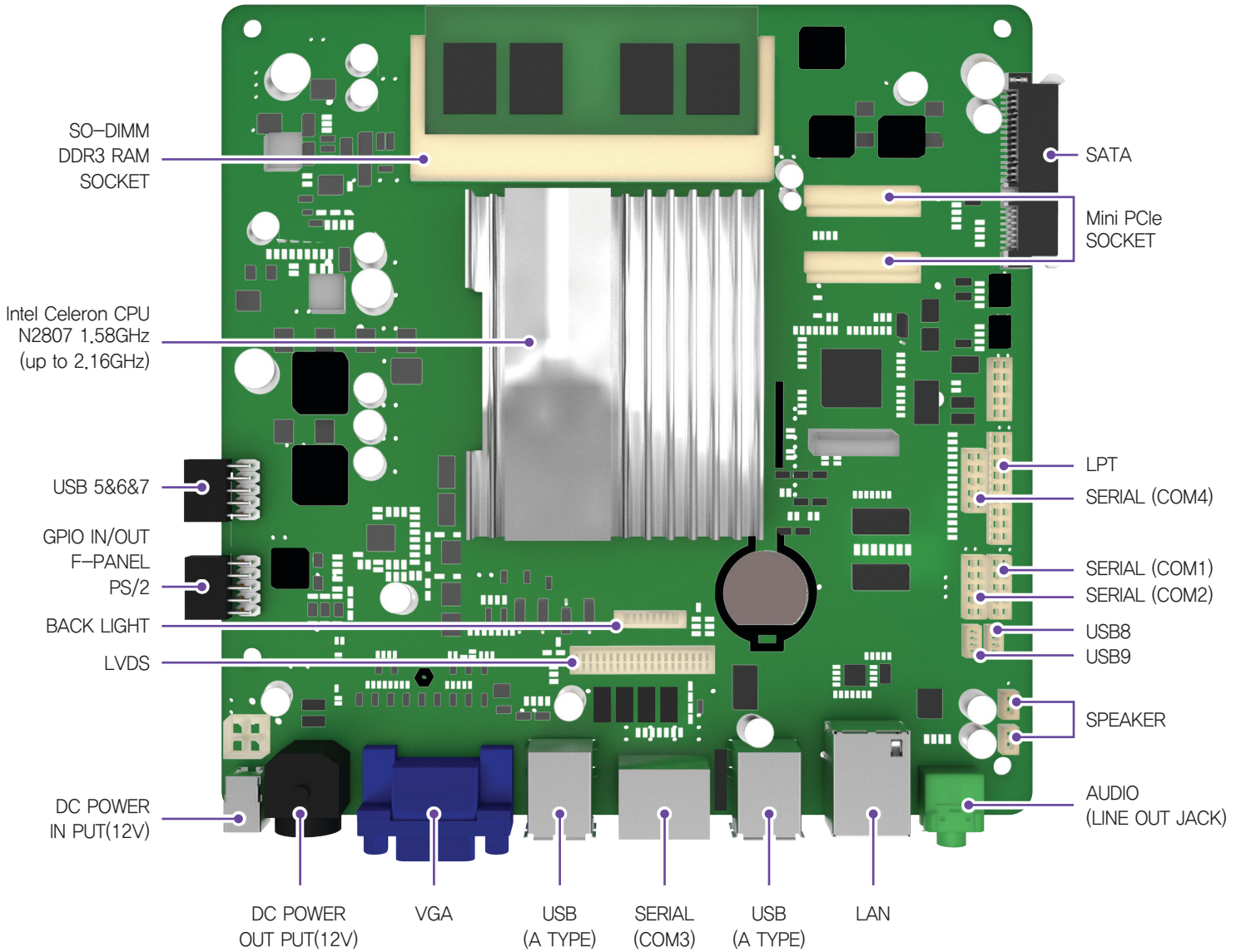
- BRASWELL(N3160) System Block Diagram



# Appendix B. System Configuration

## 02. Main Chipset & Connector

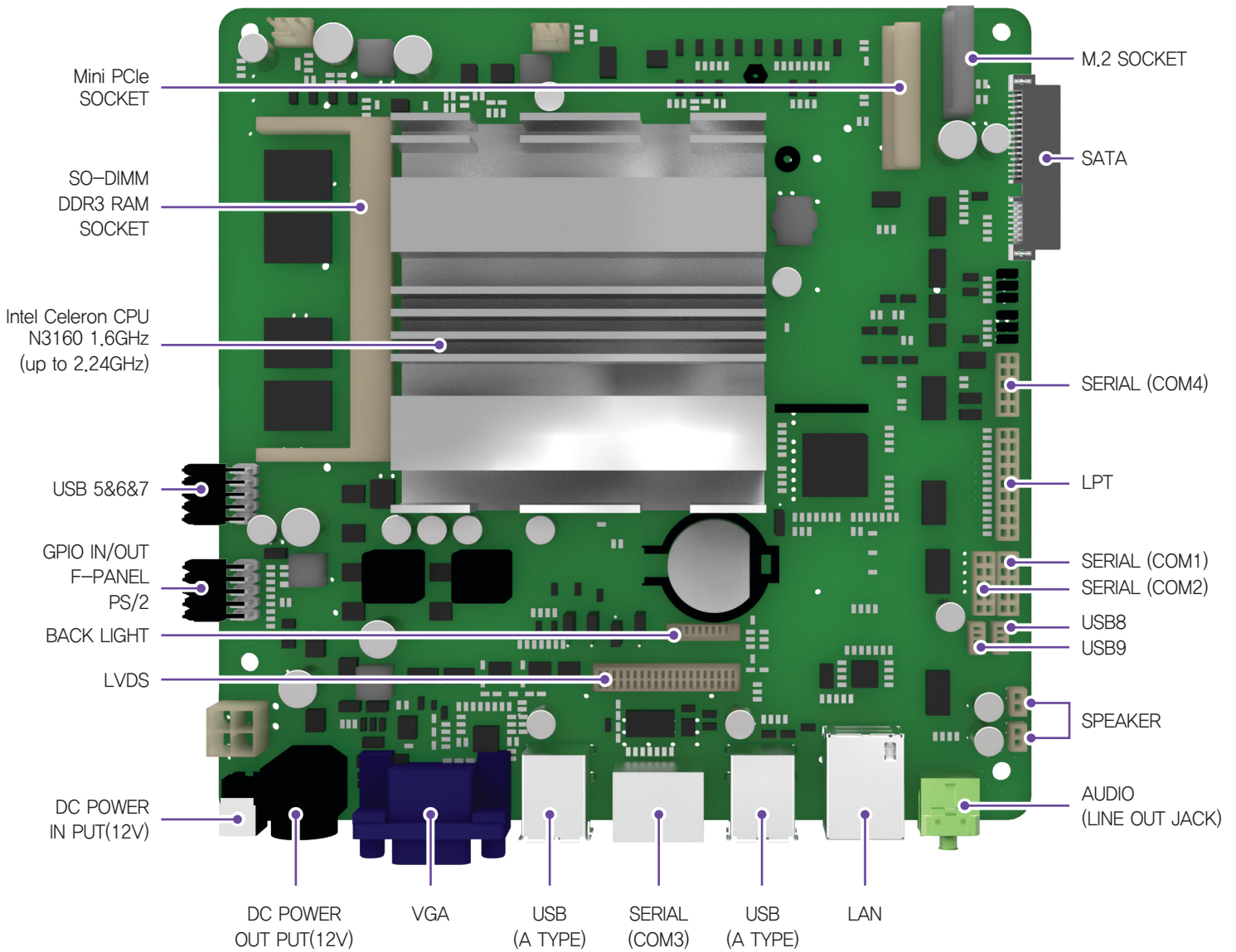
- BAYTRAIL(N2807) Main Chipset & Connector



## Appendix B. System Configuration

### 02. Main Chipset & Connector

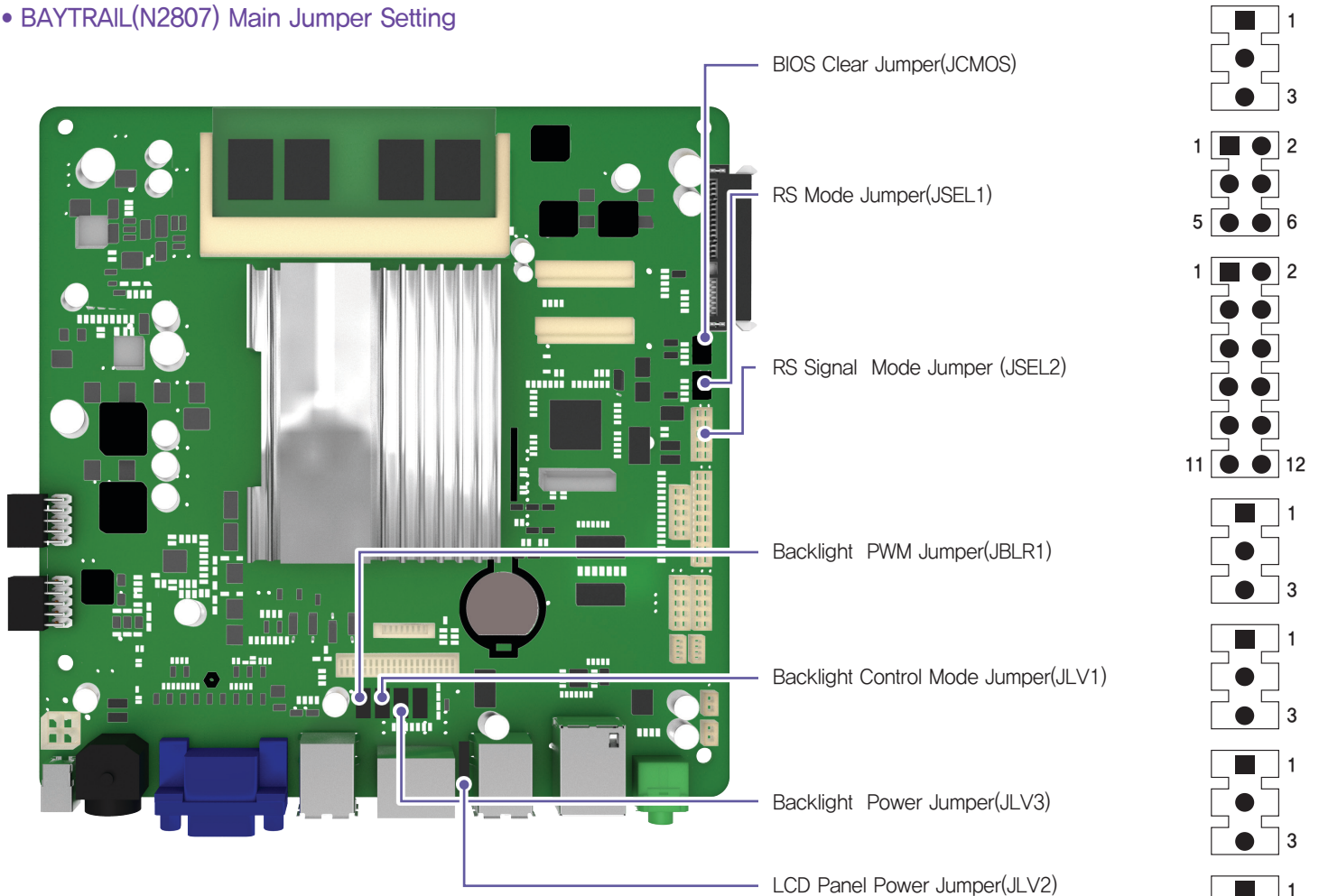
- BRASWELL(N3160) Main Chipset & Connector



# Appendix B. System Configuration

## 03. Main Jumper Setting

### • BAYTRAIL(N2807) Main Jumper Setting



#### BIOS Clear Jumper(JCMOS)

Jumper Setting	Mode
1-2 Short	Normal Operation(Default)
2-3 Short	CMOS Clear

#### RS Mode Jumper(JSEL1)

Jumper Setting	Mode
1-2 Short	RS-232(Default)
3-4 Short	RS-422
5-6 Short	RS-485

#### Backlight PWM Jumper(JBLR1)

Jumper Setting	Mode
1-2 Short	Reverse
2-3 Short	Forward(Default)

#### RS Signal Mode Jumper(JSEL2)

Jumper Setting	Mode
1-3/2-4/7-9/8-10 Short	RS-232(Default)
3-5/4-6/9-11/10-12 Short	RS-422
3-5/4-6/9-11/10-12 Short	RS-485

#### Backlight Control Mode Jumper(JLV1)

Jumper Setting	Mode
1-2 Short	Voltage Level
2-3 Short	PWM(Default)

#### LCD Panel Power Jumper(JLV2)

Jumper Setting	Mode
1-2 Short	3.3V(Default)
2-3 Short	5V

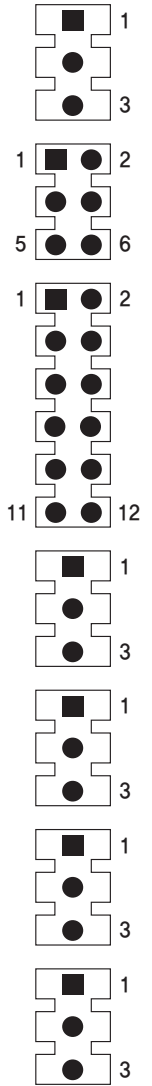
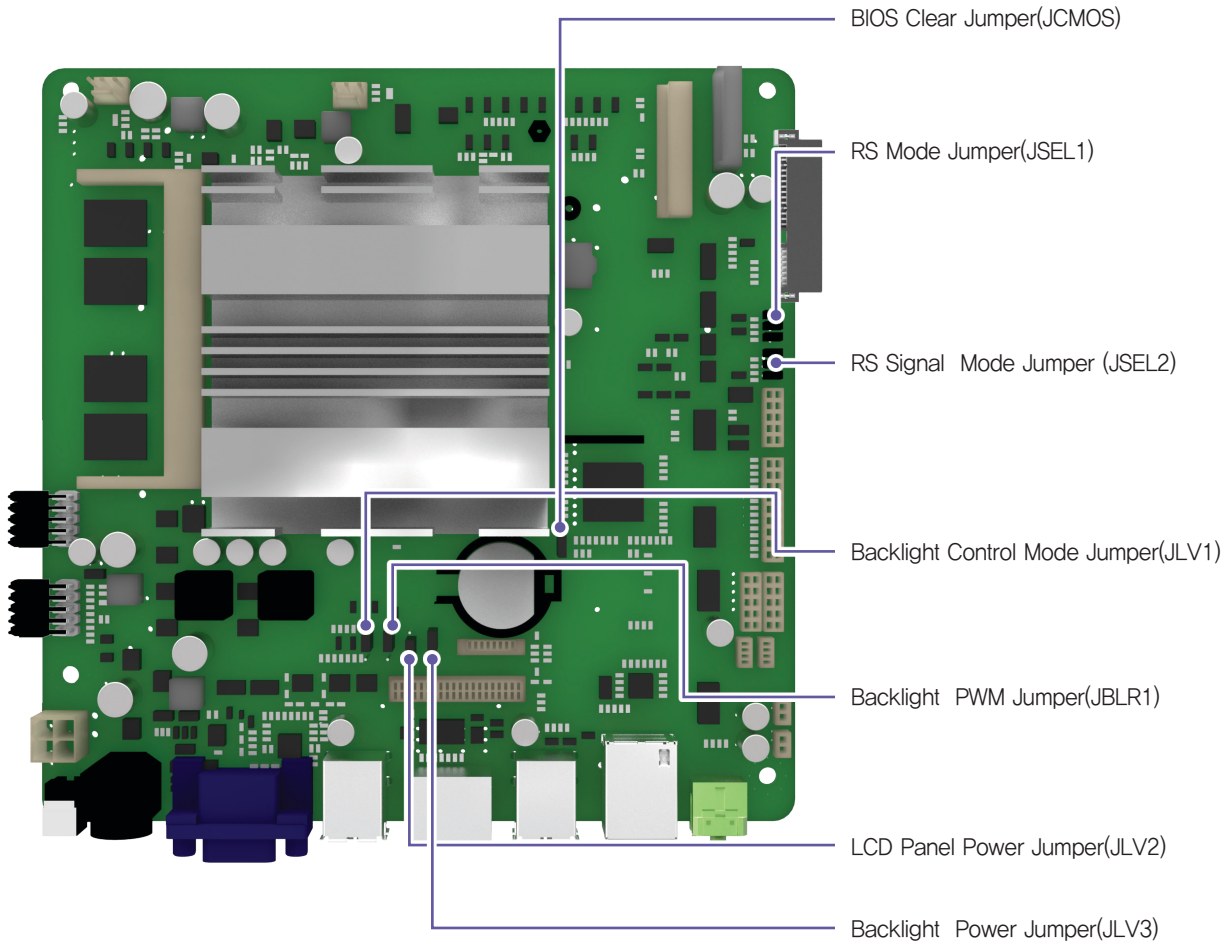
#### Backlight Power Jumper(JLV3)

Jumper Setting	Mode
1-2 Short	5V
2-3 Short	12V(Default)

# Appendix B. System Configuration

## 03. Main Jumper Setting

### • BRASWELL(N3160) Main Jumper Setting



#### BIOS Clear Jumper(JCMOS)

Jumper Setting	Mode
1-2 Short	Normal Operation(Default)
2-3 Short	CMOS Clear

#### RS Signal Mode Jumper(JSEL2)

Jumper Setting	Mode
1-3/2-4/7-9/8-10 Short	RS-232(Default)
3-5/4-6/9-11/10-12 Short	RS-422
3-5/4-6/9-11/10-12 Short	RS-485

#### RS Mode Jumper(JSEL1)

Jumper Setting	Mode
1-2 Short	RS-232(Default)
3-4 Short	RS-422
5-6 Short	RS-485

#### Backlight Control Mode Jumper(JLV1)

Jumper Setting	Mode
1-2 Short	Voltage Level
2-3 Short	PWM(Default)

#### Backlight PWM Jumper(JBLR1)

Jumper Setting	Mode
1-2 Short	Reverse
2-3 Short	Forward(Default)

#### LCD Panel Power Jumper(JLV2)

Jumper Setting	Mode
1-2 Short	3.3V(Default)
2-3 Short	5V

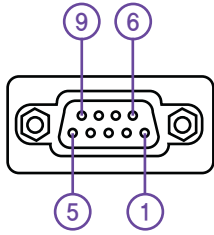
#### Backlight Power Jumper(JLV3)

Jumper Setting	Mode
1-2 Short	5V
2-3 Short	12V(Default)

# Appendix B. System Configuration

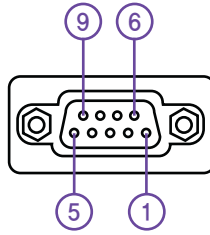
## 04. IO Pin map

- COM1/2 RS-232 Serial Port (DSUB9 MALE)



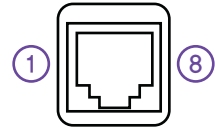
Pin Num	Description
1	DCD
2	RXD
3	TXD
4	DTR
5	GND
6	DSR
7	RTS
8	CTS
9	Ring / +5V / +12V

- COM1 RS-422/485 Serial Port (DSUB9 MALE)



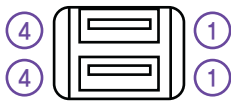
Pin Num	Description
1	TXD-
2	TXD+
3	RXD+
4	RXD-
5	N.C
6	N.C
7	N.C
8	N.C
9	N.C

- COM3 RS-232 Serial Port(RJ45)



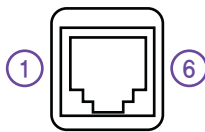
Pin Num	Description
1	Ring / +5V / +12V
2	DSR
3	TXD
4	RXD
5	RTS
6	CTS
7	GND
8	DTR

- USB Port(TYPE A)



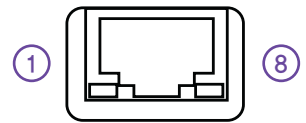
Pin Num	Description
1	VSUB(+5V)
2	D-
3	D+
4	GND

- Cash Drawer Port(RJ11)



Pin Num	Description
1	GND
2	DRAWER#1
3	DRW_COMP
4	VDRW(+12V / +24V)
5	DRAWER#2
6	GND

- LAN Port(RJ45)



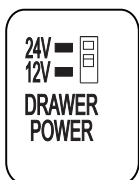
Pin Num	Description
1	MDI [0] +
2	MDI [0] -
3	MDI [1] +
4	MDI [1] -
5	MDI [2] +
6	MDI [2] -
7	MDI [3] +
8	MDI [3] -



## Appendix B. System Configuration

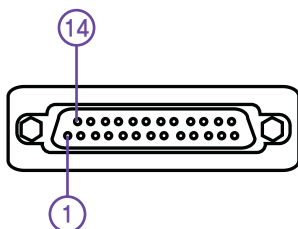
### 04. IO Pin map

- Power Selection Switch for Cash Drawer



Switch Selection	Voltage
OFF	12V (Default)
ON	24V

- Parallel Port(D-SUB25 FEMALE)

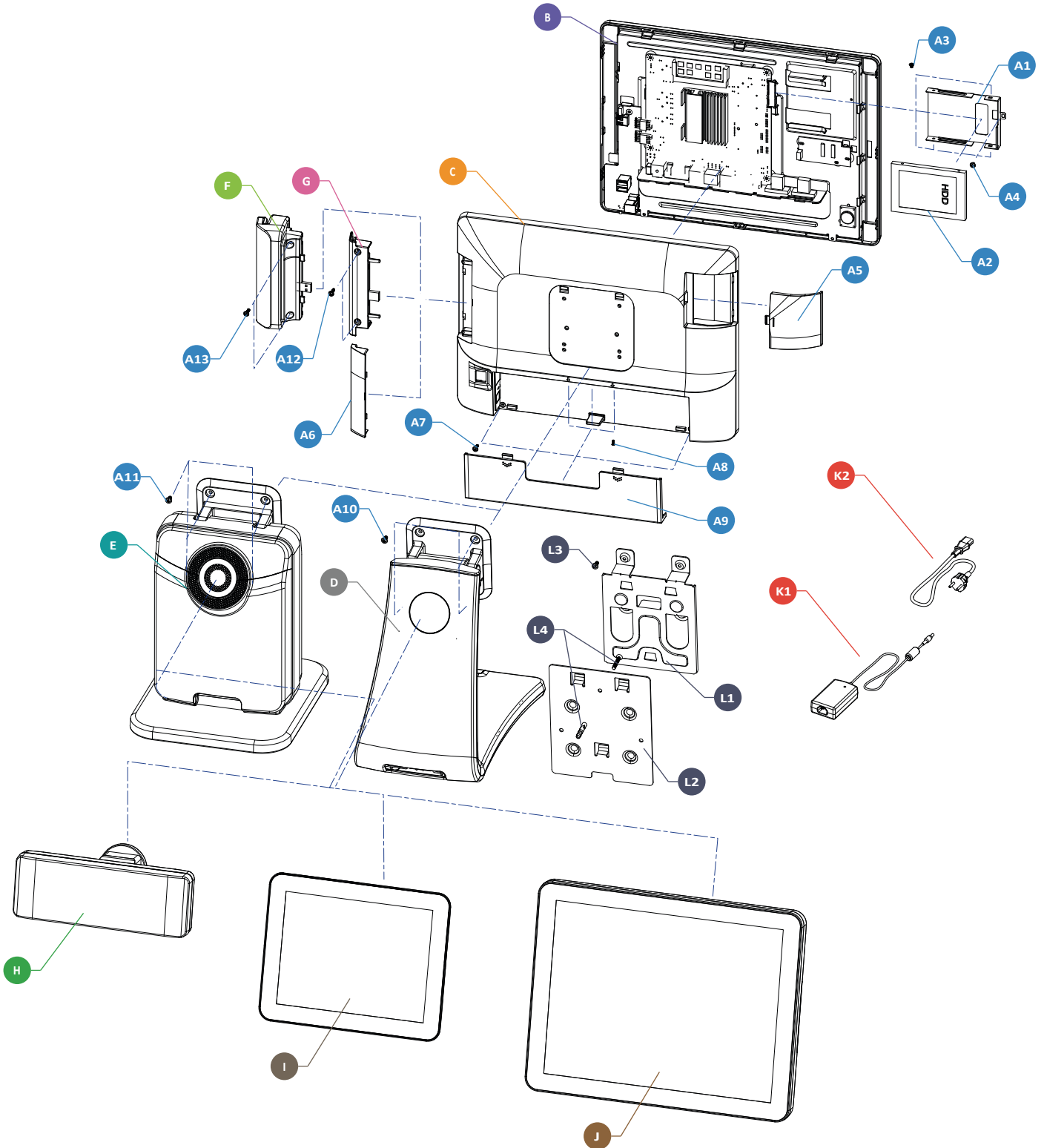


Pin Num	SPP	ECP	EPP	In/Out
1	/STROBE	/STROBE	/WRITE	I/O
2	PD0	PD0	PD0	I/O
3	PD1	PD1	PD1	I/O
4	PD2	PD2	PD2	I/O
5	PD3	PD3	PD3	I/O
6	PD4	PD4	PD4	I/O
7	PD5	PD5	PD5	I/O
8	PD6	PD6	PD6	I/O
9	PD7	PD7	PD7	I/O
10	/ACK	/ACK	NTR	I
11	BUSY	BUSY,PERIPHACK	/WAIT	I
12	PERROR	PE,/ACKREVERSE	PE	I
13	SELECT	SELECT	SELECT	I
14	/AUTOFD	/AUTOFD,HOSTACK	/DATASTB	O
15	/FAULT	/FAULT,/PERIPHREQST	/FAULT	I
16	/INIT	/FAULT,/REVERSEQST	/RESET	O
17	/SLCTIN	/SLCTIN	/ADDRSTB	O
18-25	GND	GND	GND	-

# Appendix B. System Configuration

## 05. Parts List

• MAIN



## Appendix B. System Configuration

### 05. Parts List

NO	PART CODE	PARTS NAME	Q'TY	Serviceable	REMARK
A1	JK91-10098A	HOLDER HDD	1		
A2	JK95-70209A	UNIT-HDD:2.5", 320G	1		
	JK95-70615E	UNIT-SSD:2.5", 64G			
A3	S600100031A	SCREW-MACHINE:FH,M3,L4	4		
A4	S600100016A	SCREW-MACHINE:PWH,M3,L4	1		
A5	JK72-21058A	PMO-COVER HDD, WHITE	1		WHITE+BLACK
	JK72-21058B	PMO-COVER HDD, BLACK			BLACK
A6	JK72-21057A	PMO-DUMMY MSR, WHITE	1		WHITE+BLACK
	JK72-21057B	PMO-DUMMY MSR, BLACK			BLACK
A7	S600200005A	SCREW-TAPPING:PWH,M3,L10	2		
A8	S600100044A	SCREW-MACHINE:BH,M3,L5	2		
A9	JK72-21059A	PMO-COVER WIRE, WHITE	1		WHITE+BLACK
	JK72-21059B	PMO-COVER WIRE, BLACK			BLACK
A10	S600100039A	SCREW-MACHINE:PWH,M4,L8,WHITE	4		
	S600100039A	SCREW-MACHINE:PWH,M4,L8,WHITE	4		
A11	S600100039A	SCREW-MACHINE:PWH,M4,L8,WHITE	4		WHITE+BLACK
	S600100169A	SCREW-MACHINE:PWH,M4,L8,BLACK			BLACK
A12	S600200014A	SCREW-TAPPING:PWH,M3,L12	2		F
A13	S600200014A	SCREW-TAPPING:PWH,M3,L12	2		G
B	JK91-20063B	ASSY-MAIN FRONT (NORMAL)	1		
	JK91-20065B	ASSY-MAIN FRONT (PCT)			
C	JK95-70803A	ASSY-COVER REAR, WHITE	1		WHITE+BLACK
	JK95-70803B	ASSY-COVER REAR, BLACK			BLACK
D	JK95-70804A	ASSY-STAND, WHITE+BLACK	1		WHITE+BLACK
	JK95-70804B	ASSY-STAND, BLACK			BLACK
E	JK95-70808A	ASSY-V STAND, WHITE	1		WHITE
	JK95-70808B	ASSY-V STAND, BLACK			BLACK
F	-	ASSY-MSR_Domestic	1		OPTION
G	JK95-70609B	ELA-UNIT MSR	1		OPTION
H	QCD-S50V202W	ASSY-VFD DISPLAY(CHARACTER), WHITE	1		OPTION
	QCD-S50V202B	ASSY-VFD DISPLAY(CHARACTER), BLACK			
	QCD-S50G256W	ASSY-VFD DISPLAY(GRAPHIC), WHITE			
	QCD-S50G256B	ASSY-VFD DISPLAY(GRAPHIC), BLACK			
	QCD-STVV202W	ASSY-VFD DISPLAY(CHARACTER), WHITE			OPTION (V STAND)
	QCD-STVV202B	ASSY-VFD DISPLAY(CHARACTER), BLACK			
	QCD-STVG256W	ASSY-VFD DISPLAY(GRAPHIC), WHITE			
	QCD-STVG256B	ASSY-VFD DISPLAY(GRAPHIC), BLACK			
I	SCD-100/D50NNWN	ASSY-9.7"DUAL DISPLAY, WHITE	1		OPTION
	SCD-100/D50NNBN	ASSY-9.7"DUAL DISPLAY, BLACK			
	SCD-100/DTVNNWN	ASSY-9.7" DUAL MONITOR, WHITE			OPTION
	SCD-100/DTVNNBN	ASSY-9.7" DUAL MONITOR, BLACK			(V STAND)

## Appendix B. System Configuration

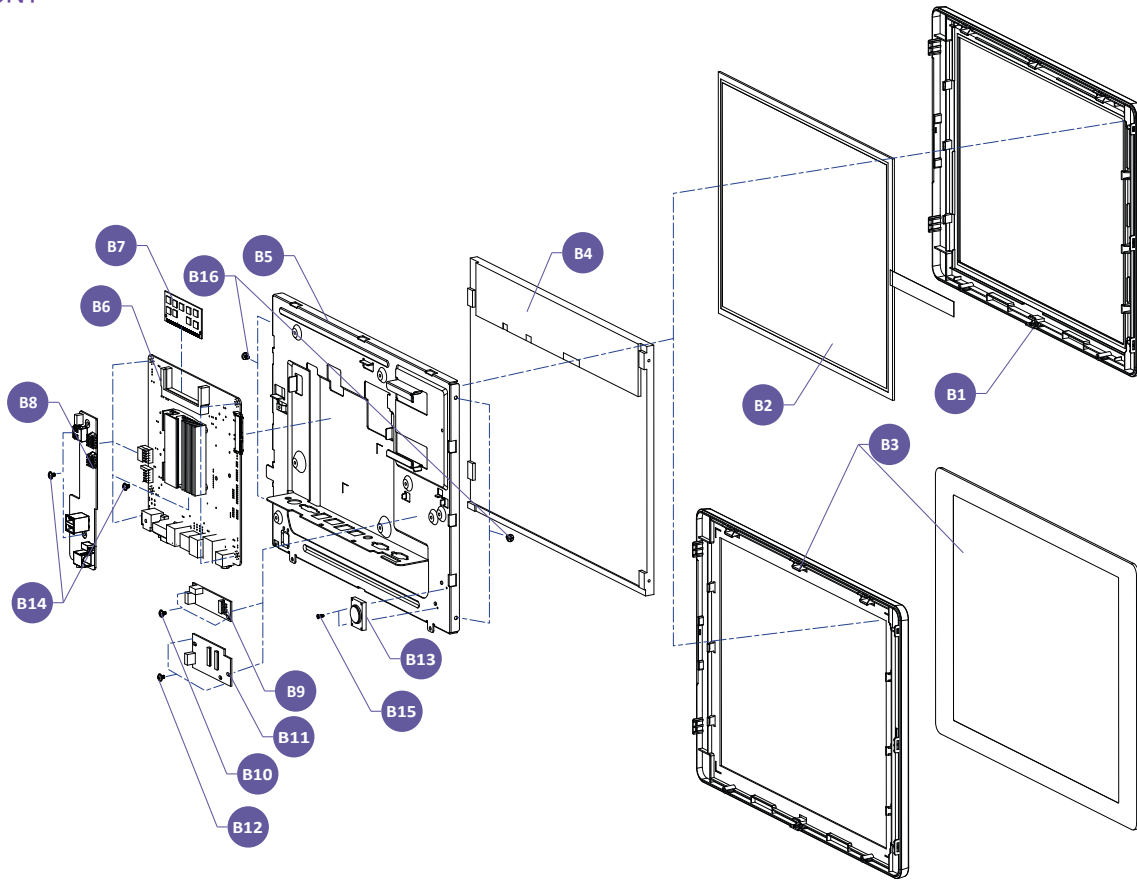
### 05. Parts List

NO	PART CODE	PARTS NAME	Q'TY	Serviceable	REMARK
J	QCD-STSL15NWB	ASSY-15"DUAL DISPLAY, WHITE	1		OPTION
	QCD-STSL15NBB	ASSY-15"DUAL DISPLAY, BLACK			
	QCD-STVL15NWB	ASSY-15"DUAL DISPLAY(V STAND), WHITE			
	QCD-STVL15NBB	ASSY-15"DUAL DISPLAY(V STAND), BLACK			
K1	JK44-10012A	POWER-SMPS:12V/5A,60W	1		
K2	JK39-20004A	CBF POWER CORD	1		EUROPE
	JK39-20004B				USA
	JK39-20004C				UK
	JK39-20004D				AUSTRALIA
	JK39-20004E				KOREA
	JK39-20004F				SOUTH AFRICA
	JK39-20004G				ISRAEL
	JK39-20004H				INDIA
	JK39-20004J				ARGENTINA
L		WALL MOUNT	1		OPTION
L1	JK70-20392A	IPR-HOLLDER WALL	1		
L2	JK70-20046A	IPR-BRKT WALL	1		
L3	S600200026A	SCREW-TAPTITE:PWH,M4,L10	4		
L4	JK75-20016A	MEC-WALL ANCHOR ASSY	1		

# Appendix B. System Configuration

## 05. Parts List

• MAIN FRONT

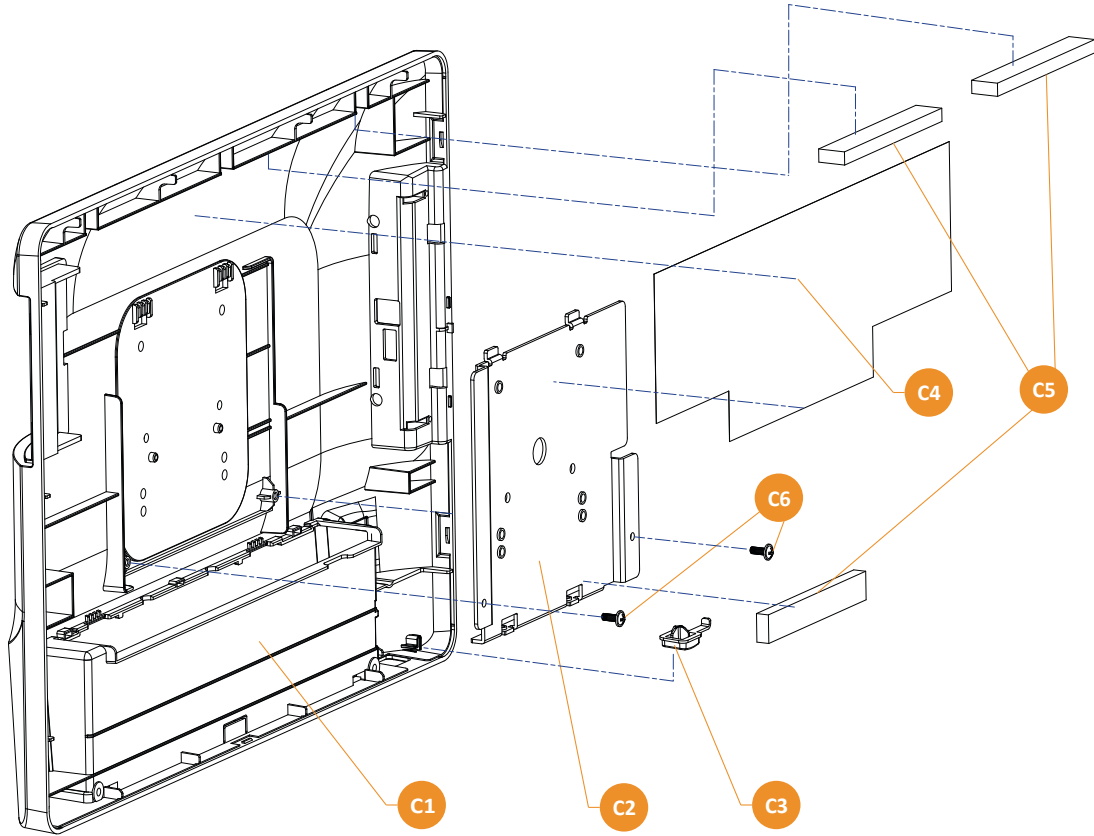


NO	PART CODE	PARTS NAME	Q'TY	Serviceable	REMARK
B1	JK72-21054B	PMO-FRONT_DISPLAY(NORMAL)	1		NORMAL
B2	JK95-70169E	ELA-TOUCH PANEL	1		NORMAL
B3	JK91-20066B	ASSY-FRONT DISPLAY(PCT)	1		PCT
B4	JK95-70567A	LCD:PC-POS,LED PANEL	1		
B5	JK70-20442B	IPR-BRKT_DISPLAY	1		
B6	JK95-70799A	MOTHER B'D:Celeron,N2807	1		
	JK95-70799B	MOTHER B'D:Braswell,N3160	1		
B7	JK95-70215A	UNIT-DDR3 MEMORY	1		
B8	JK92-10207A	PBA SUB:TITAN-S,OSD&DRW	1		
B9	JK95-70760D	UNIT-CONTROLLER:RESISTIVE	1		NORMAL
B10	S600100016A	SCREW-MACHINE:PWH,M3,L4	2		NORMAL
B11	JK95-70760C	UNIT-CONTROLLER:PCT	1		PCT
B12	S600100016A	SCREW-MACHINE:PWH,M3,L4	2		PCT
B13	S300400005A	UNIT-SPEAKER	1		
B14	S600100016A	SCREW-MACHINE:PWH,M3,L4	6		
B15	S600100024A	SCREW-MACHINE:BH,M2,L6	2		
B16	S600100044A	SCREW-MACHINE:BH,M3,L5	4		
B17	JK39-40775A	HARNESS-USB	1		
B18	JK39-80017A	HARNESS-INVERTER	1		
B19	JK39-80042B	HARNESS-LVDS	1		
B20	JK39-80101A	HARNESS-SERIAL	2		
B21	JK39-80102A	HARNESS-PARALLEL	1		

## Appendix B. System Configuration

### 05. Parts List

- COVER REAR

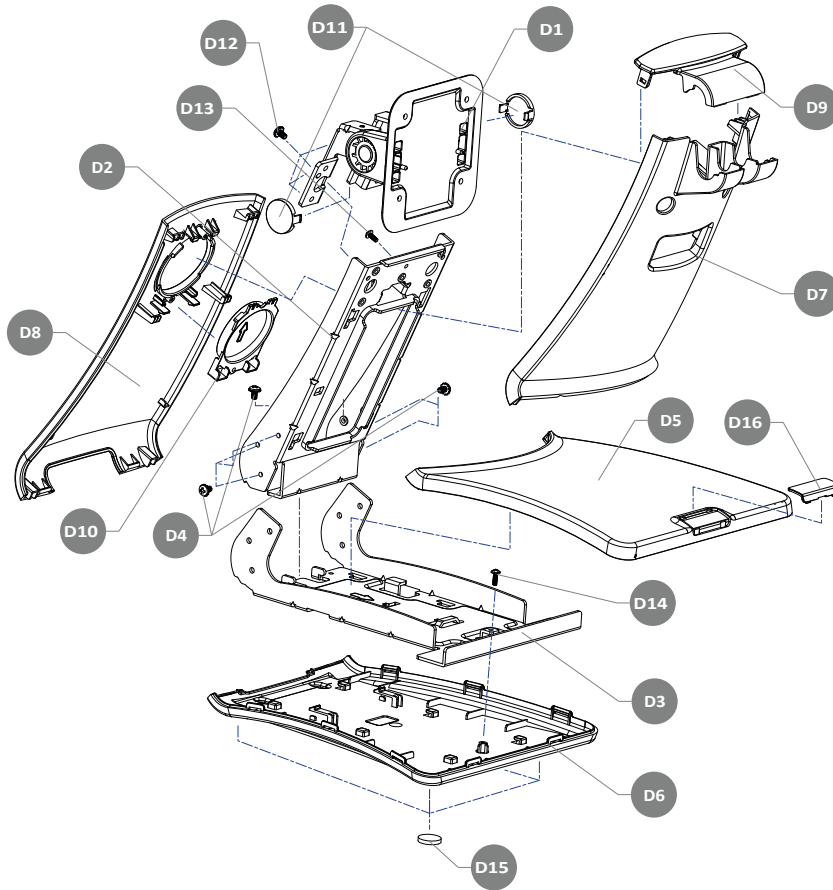


NO	PART CODE	PARTS NAME	Q'TY	Serviceable	REMARK
C	JK95-70803A	ASSY-COVER REAR, WHITE	1		WHITE+BLACK
	JK95-70803B	ASSY-COVER REAR, BLACK			BLACK
C1	JK72-21056A	PMO-REAR_DISPLAY, WHITE	1		WHITE+BLACK
	JK72-21056B	PMO-REAR_DISPLAY, BLACK			BLACK
C2	JK70-20443B	IPR-BRKT COVER_REAR	1		
C3	JK72-21060A	PMO-BUTTON_POWER	1		
C4	JK68-40321A	LABEL(R)-COPPER TAPE	1		
C5	JK68-40322A	LABEL(R)-EMI FABRIC IF	3		
C6	S600200006A	SCREW-TAPPING:PWH,M3,L8	2		

# Appendix B. System Configuration

## 05. Parts List

• STAND

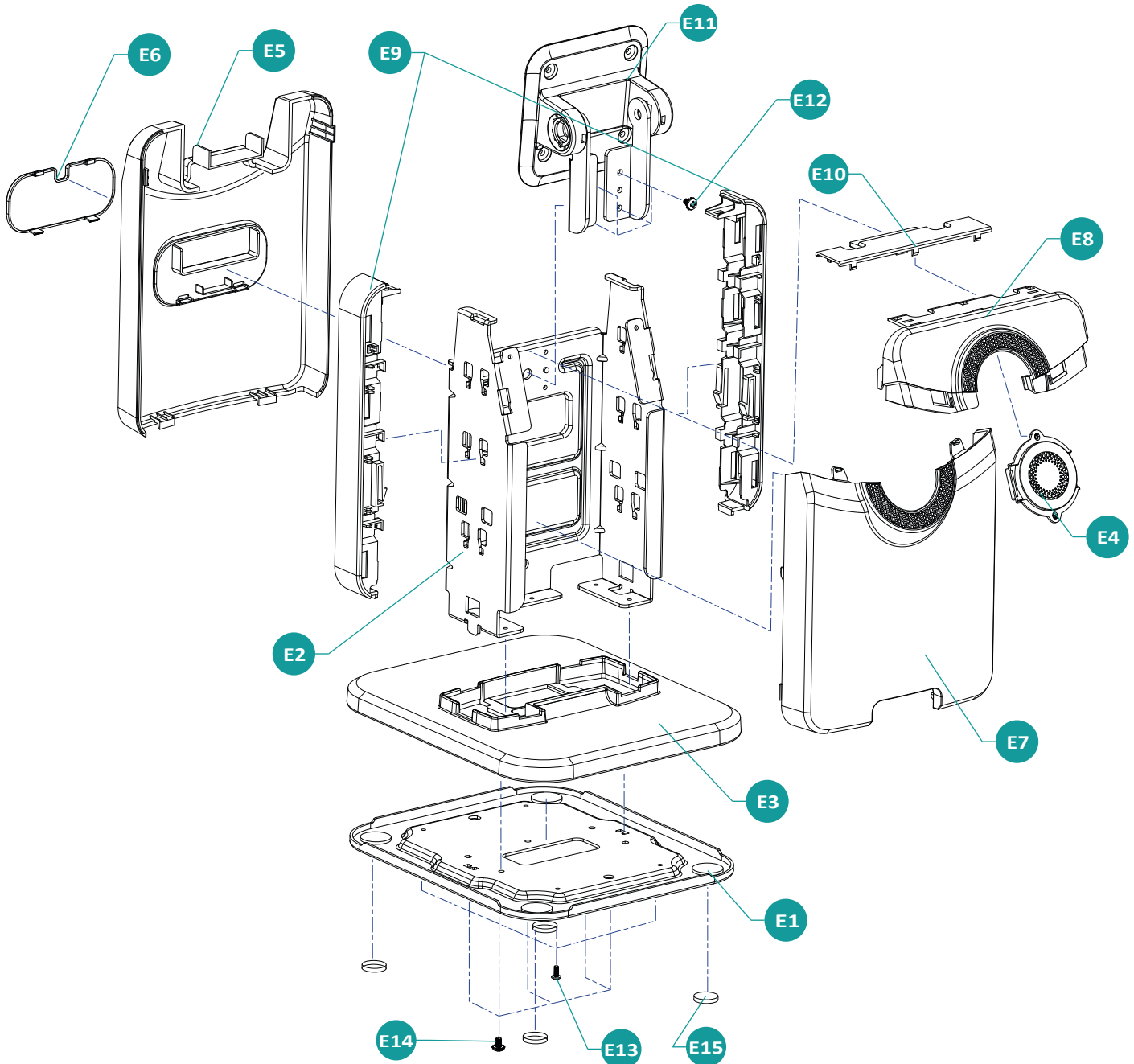


NO	PART CODE	PARTS NAME	Q'TY	Serviceable	REMARK
D	JK95-70804A	ASSY-STAND, WHITE+BLACK	1		
	JK95-70804B	ASSY-STAND, BLACK			
D1	JK75-40017A	MAIN-HINGE ASSY, WHITE	1		WHITE+BLACK
	JK75-40017B	MAIN-HINGE ASSY, BLACK			BLACK
D2	JK70-20440B	IPR-FRAME STAND	1		
D3	JK70-20441B	IPR-BASE STAND	1		
D4	S600600007A	SCREW-ASSY MACH: BH, M4, L8	8		
D5	JK72-21047B	PMO-COVER BASE	1		
D6	JK72-21048A	PMO-COVER BOTTOM, WHITE	1		WHITE+BLACK
	JK72-21048B	PMO-COVER BOTTOM, BLACK			BLACK
D7	JK72-21049B	PMO-COVER FRONT	1		
D8	JK72-21050A	PMO-COVER REAR, WHITE	1		WHITE+BLACK
	JK72-21050B	PMO-COVER REAR, BLACK			BLACK
D9	JK72-21051B	PMO-COVER TOP	1		
D10	JK72-21052A	PMO-DUMMY MOUNT, WHITE	1		WHITE+BLACK
	JK72-21052B	PMO-DUMMY MOUNT, BLACK			BLACK
D11	JK72-21063A	PMO-CAP HINGE, WHITE	2		WHITE+BLACK
	JK72-21063B	PMO-CAP HINGE, BLACK			BLACK
D12	S600600007A	SCREW-ASSY MACH: BH, M4, L8	4		
D13	S600200006A	SCREW-TAPPING: M3, L8	1		
D14	S600200006A	SCREW-TAPPING: M3, L8	1		
D15	JK73-11023A	RMO-FOOT RUBBER	4		
D16	JK72-20551D	PMO-BRAND FRONT(SAM4S)	1		
	JK72-20551K	PMO-BRAND FRONT(NO LOGO)			

## Appendix B. System Configuration

### 05. Parts List

- V STAND





## Appendix B. System Configuration

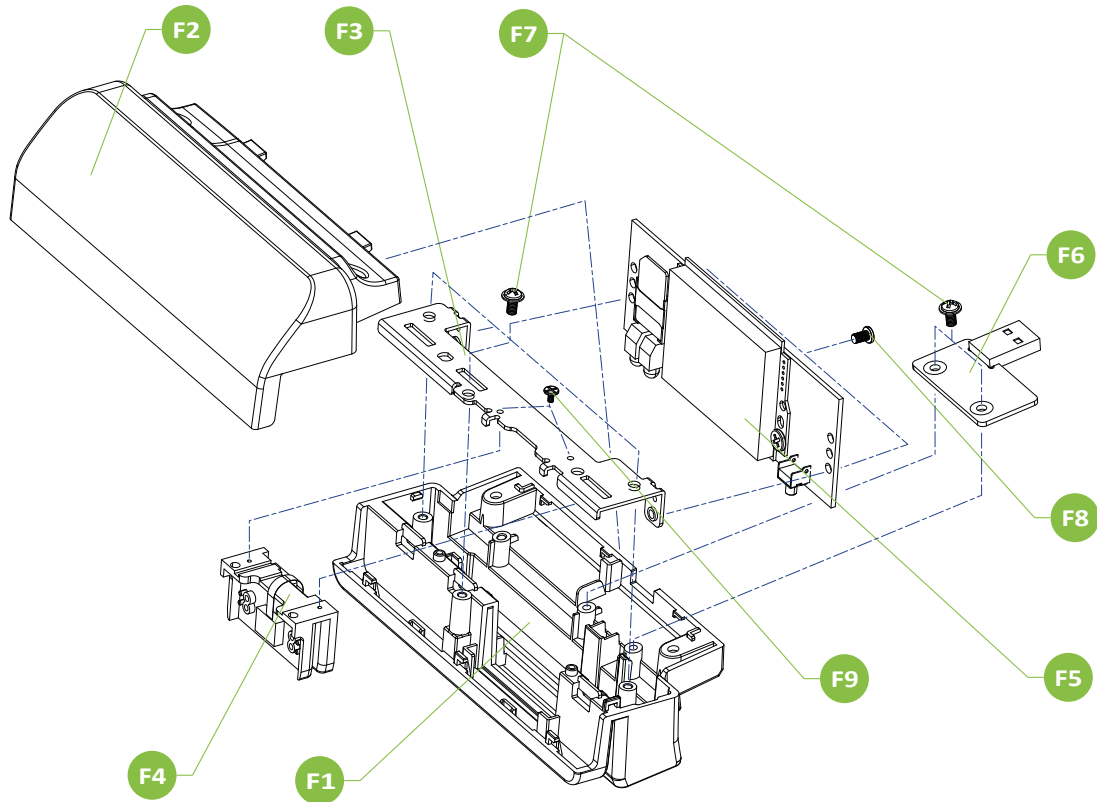
### 05. Parts List

NO	PART CODE	PARTS NAME	Q'TY	Serviceable	REMARK
E	JK95-70808A	V-STAND, WHITE	1		
	JK95-70808B	V-STAND, BLACK			
E1	JK70-20450B	IPR-FRAME BOTTOM	1		
E2	JK70-20451B	IPR-FRAME MAIN	1		
E3	JK72-21067A	PMO-STAND COVER BOTTOM, WHITE	1		WHITE
	JK72-21067B	PMO-STAND COVER BOTTOM, BLACK			BLACK
E4	JK72-21068A	PMO-STAND COVER DUMMY, WHITE	1		WHITE
	JK72-21068B	PMO-STAND COVER DUMMY, BLACK			BLACK
E5	JK72-21069A	PMO-STAND COVER FRONT, WHITE	1		WHITE
	JK72-21069B	PMO-STAND COVER FRONT, BLACK			BLACK
E6	JK72-20906A	PMO-DUMMY STAND	1		
E7	JK72-21070A	PMO-STAND COVER REAR, WHITE	1		WHITE
	JK72-21070B	PMO-STAND COVER REAR, BLACK			BLACK
E8	JK72-21071A	PMO-STAND COVER TOP, WHITE	1		WHITE
	JK72-21071B	PMO-STAND COVER TOP, BLACK			BLACK
E9	JK72-21072A	PMO-STAND SIDE DECO	2		
E10	JK72-21073A	PMO-STAND TOP DECO	1		
E11	JK75-40018A	MAIN-HINGE_ASSY, WHITE	1		WHITE
	JK75-40018B	MAIN-HINGE_ASSY, BLACK			BLACK
E12	S600600007A	SCREW-ASSY MACH: BH,M4,L8	4		
E13	S600200006A	SCREW-TAPPING: PWH,M3,L8	4		
E14	S600600007A	SCREW-ASSY MACH: BH,M4,L8	5		
E15	JK73-11023A	RMO-FOOT RUBBER	4		

## Appendix B. System Configuration

### 05. Parts List

- MSR(Domestic)

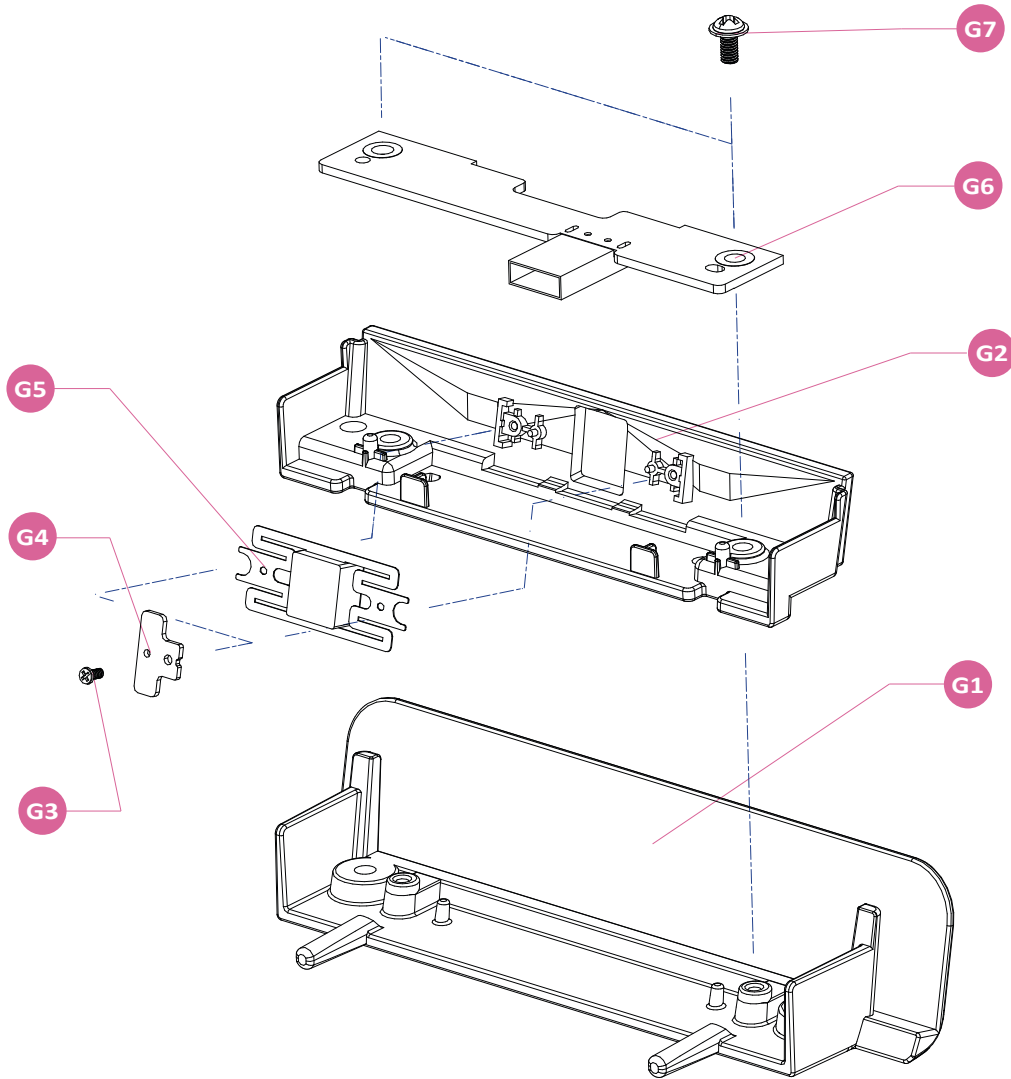


NO	PART CODE	PARTS NAME	Q'TY	Serviceable	REMARK
F	-	ASSY-MSR	1		
F1	JK72-21061B	PMO-MSR UPPER	1		
F2	JK72-21062A	PMO-MSR LOWER	1		
F3	JK70-20445B	IPR-BRKT MSR	1		
F4	-	MSR MODULE	1		
F5	-	MSR BOARD	1		
F6	JK92-10172A	IC, MSR USB JOINT	1		
F7	S600200028A	SCREW:PWH,M3,L6	5		
F8	S600100016A	SCREW:M3,L4	2		
F9	S600300026A	SCREW:M1.7,L3.5	2		

## Appendix B. System Configuration

### 05. Parts List

- MSR

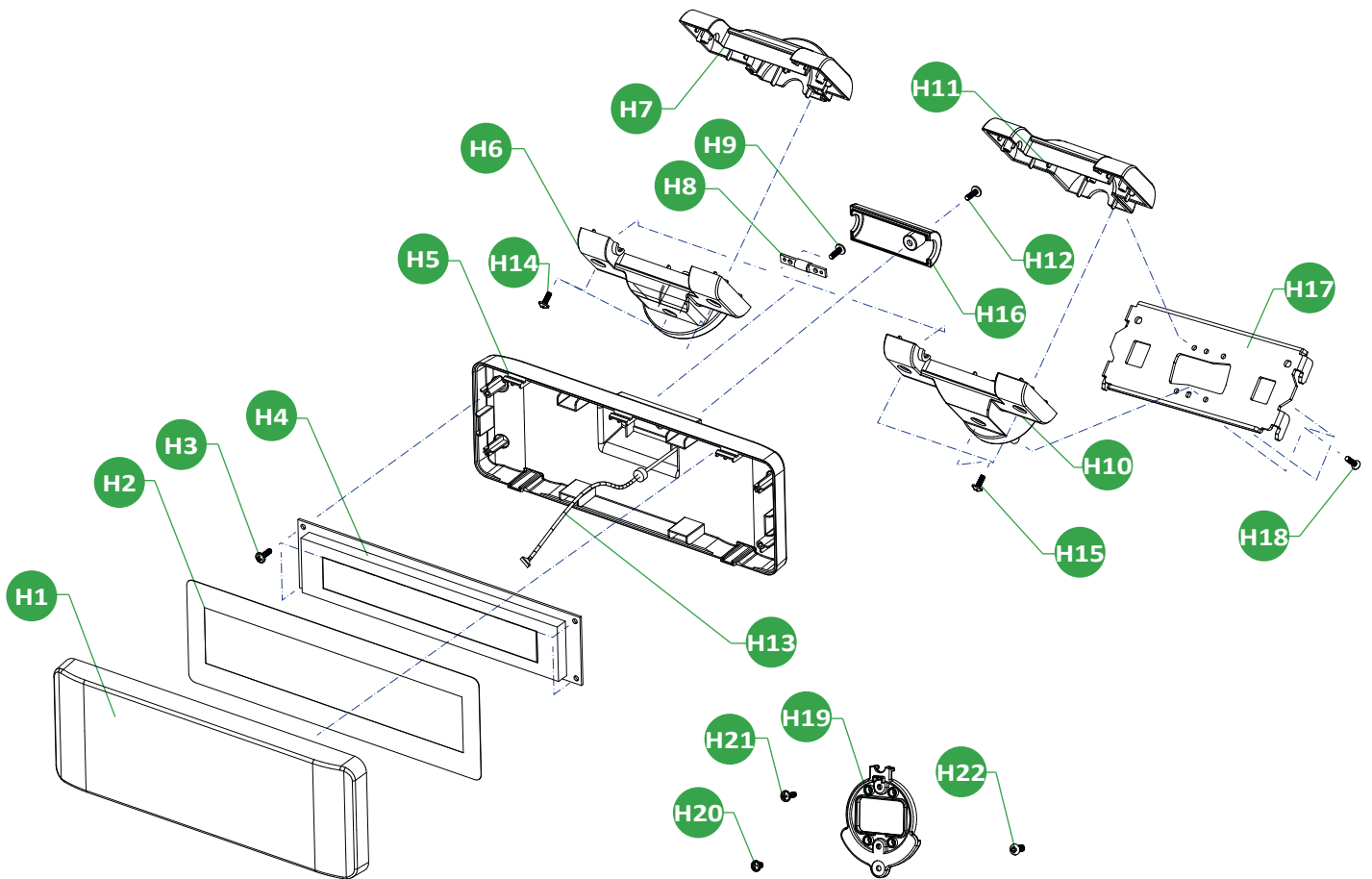


NO	PART CODE	PARTS NAME	Q'TY	Serviceable	REMARK
G	JK95-70609B	ASSY-MSR	1		OPTION
G1	JK70-20345A	IPR-COVER MSR	1		
G2	JK72-20899A	PMO-LED GUIDE	1		
G3	S600300026A	SCREW-DELTA PT:M1.8,L3.5	2		
G4	JK70-20391A	IPR-BRKT MSR GUIDE	2		
G5	JK48-10012B	MSR MODULE	1		MODULE
G6	JK92-10098A	MSR BOARD	1		
G7	S600100017A	SCREW-MACHINE:M3,L6	2		

# Appendix B. System Configuration

## 05. Parts List

- VFD



## Appendix B. System Configuration

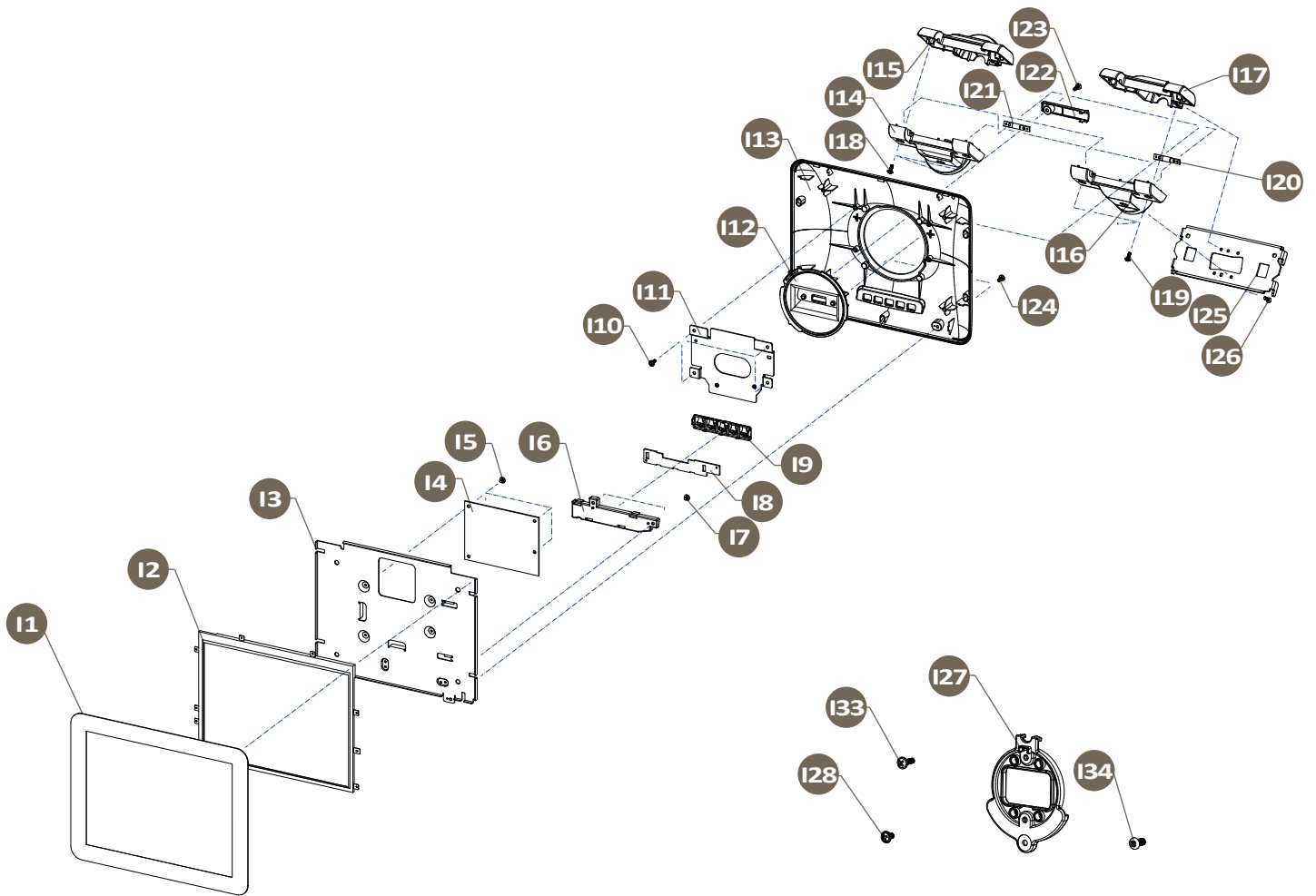
### 05. Parts List

NO	PART CODE	PARTS NAME	Q'TY	Serviceable	REMARK
H	QCD-S50V202W	ASSY-VFD DISPLAY(CHARACTER), WHIHITE	1		OPTION
	QCD-S50V202B	ASSY-VFD DISPLAY(CHARACTER), BLACK			
	QCD-S50G256W	ASSY-VFD DISPLAY(GRAPHIC), WIHTE			
	QCD-S50G256B	ASSY-VFD DISPLAY(GRAPHIC), BLACK			
	QCD-STVV202W	ASSY-VFD DISPLAY(CHARACTER), WHIHITE			OPTION(V STAND)
	QCD-STVV202B	ASSY-VFD DISPLAY(CHARACTER), BLACK			
	QCD-STVG256W	ASSY-VFD DISPLAY(GRAPHIC), WIHTE			
	QCD-STVG256B	ASSY-VFD DISPLAY(GRAPHIC), BLACK			
H1	JK72-20299C	PMO-WINDOW VFD	1		
H2	JK68-40120A	LABEL®-VFD SHEET	1		
H3	S600300020A	SCREW-TAPTITE:M3,L10	2		
H4	JK46-00006A	UNIT-VFD MODULE(CHARACTER)	1		CHARACTER
	JK46-00007A	UNIT-VFD MODULE(GRAPHIC)			GRAPHIC
H5	JK72-20298B	PMO-REAR VFD(M), WHITE	1		WHITE
	JK72-20298A	PMO-REAR VFD(M), BLACK			BLACK
H6	JK72-20914A	PMO-HOLDER DUAL LOWER, WHITE	1		WHITE
	JK72-20914B	PMO-HOLDER DUAL LOWER, BLACK			BLACK
H7	JK72-20913A	PMO-HOLDER DUAL UPPER, WHITE	1		WHITE
	JK72-20913B	PMO-HOLDER DUAL UPPER, BLACK			BLACK
H8	JK75-40004A	MEC-HINGE ASSY	1		
H9	S600300020A	SCREW-TAPTITE:M3,L10	2		
H10	JK72-21065A	PMO-HOLDER DUAL LOWER, WHITE	1		WHITE(V STAND)
	JK72-21065B	PMO-HOLDER DUAL LOWER, BLACK			BLACK(V STAND)
H11	JK72-21066A	PMO-HOLDER DUAL UPPER, WHITE	1		WHITE(V STAND)
	JK72-21066B	PMO-HOLDER DUAL UPPER, BLACK			BLACK(V STAND)
H12	S600300020A	SCREW-TAPTITE:M3,L10	1		
H13	JK39-60075B	CABLE-POLE:J45,550	1		
H14	S600200006A	SCREW-TAPPING:M3,L8	3		
H15	S600200006A	SCREW-TAPPING:M3,L8	3		V STAND
H16	JK72-20300B	PMO-REAR VFD DUMMY	1		
H17	JK70-20452B	IPR-FRAME REAR MONITOR	1		V STAND
H18	S600100008A	SCREW-MACHINE:PWH,M3,L10	4		V STAND
H19	JK72-20907A	PMO-HOLDER DUAL	1		
H20	S600200028A	SCREW-TAPPING:M3,L6	1		
H21	S600200005A	SCREW-TAPPING:M3,L10	2		
H22	S600600007A	SCREW-ASSY MACH:BH,M4,L8	2		V STAND

## Appendix B. System Configuration

### 05. Parts List

- 9.7inch Dual Monitor



## Appendix B. System Configuration

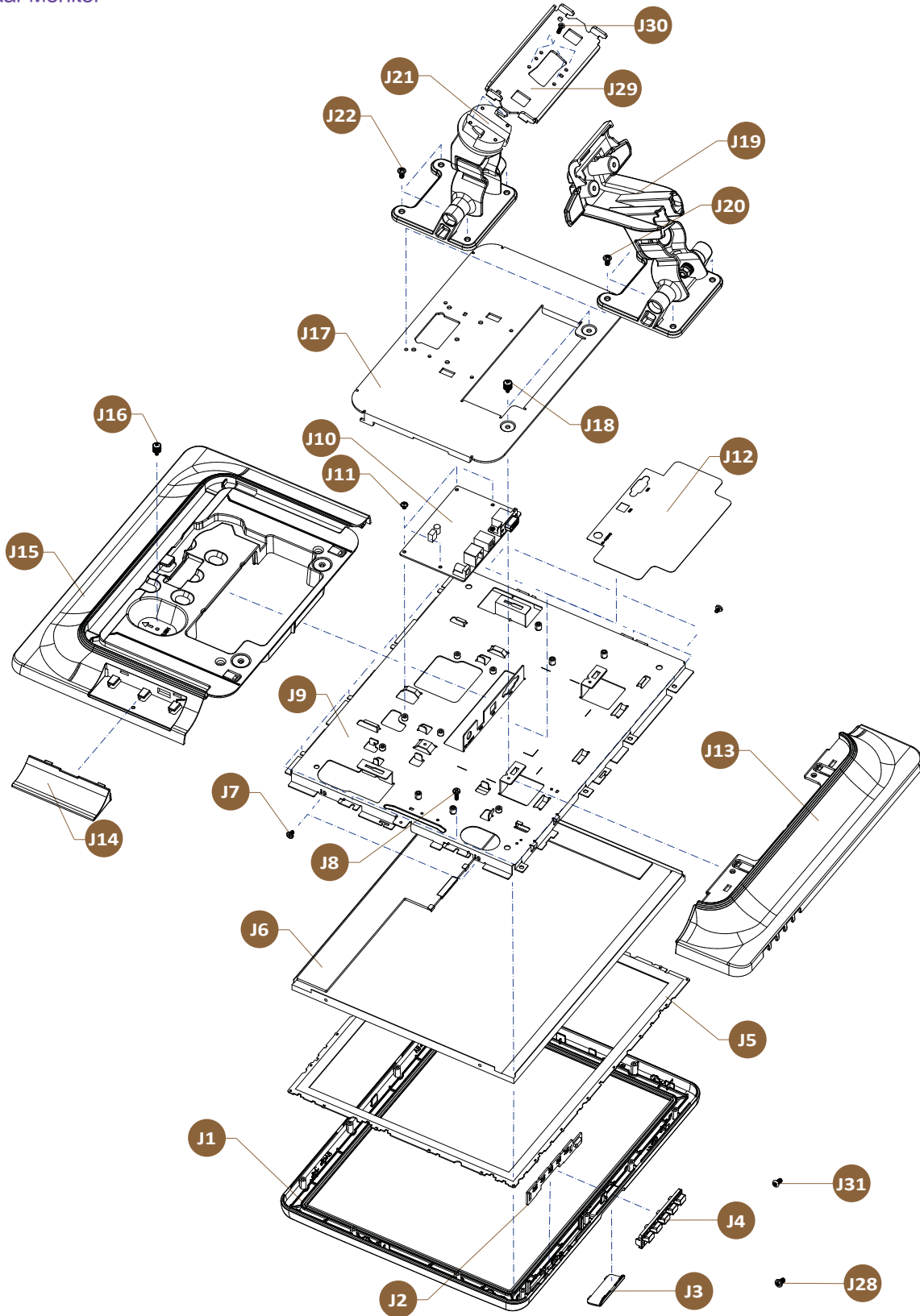
### 05. Parts List

NO	PART CODE	PARTS NAME	Q'TY	Serviceable	REMARK
I	SCD-100/D50NNWN	ASSY-9.7"DUAL DISPLAY, WHITE	1		OPTION
	SCD-100/D50NNBN	ASSY-9.7"DUAL DISPLAY, BLACK			OPTION
	SCD-100/DTVNNWN	ASSY-9.7"DUAL DISPLAY, WHITE			(V STAND)
	SCD-100/DTVNNBN	ASSY-9.7"DUAL DISPLAY, BLACK			
I1	JK95-40006A	ASSY-WINDOW FRONT, WHITE	1		WHITE
	JK95-40006B	ASSY-WINDOW FRONT, BLACK			BLACK
I2	JK07-20368A	DISPLAY-LCD	1		
I3	JK70-20368A	IPR-BRKT DISPLAY	1		
I4	JK49-10008A	UNIT-AD BOARD	1		
I5	S600100016A	SCREW-MACHINE:M3,L4	4		
I6	JK72-20457A	PMO-HOLDER BUTTON	1		
I7	S600100016A	SCRW-MACHINE:M3,L4	2		
I8	JK92-10116A	UNIT00SD BOARD	1		
I9	JK72-20547A	PMO-BUTTON, WHITE	1		WHITE
	JK72-20547B	PMO-BUTTON, BLACK			BLACK
I10	S600200006A	SCRW-TAPPING:M3,L8	4		
I11	JK70-20240A	IPR-PLATE REAR(P)	1		
I12	JK72-20596C	PMO-HOLDER HINGE(D)	1		
I13	JK72-20950A	PMO-COVER REAR(A), WHITE	1		WHITE
	JK72-20950B	PMO-COVER REAR(A), BLACK			BLACK
I14	JK72-20914A	PMO-HOLDER DUAL LOWER, WHITE	1		WHITE
	JK72-20914B	PMO-HOLDER DUAL LOWER, BLACK			BLACK
I15	JK72-20913A	PMO-HOLDER DUAL UPPER, WHITE	1		WHITE
	JK72-20913B	PMO-HOLDER DUAL UPPER, BLACK			BLACK
I16	JK72-21065A	PMO-HOLDER DUAL LOWER, WHITE	1		WHITE(V STAND)
	JK72-21065B	PMO-HOLDER DUAL LOWER, BLACK			BLACK(V STAND)
I17	JK72-21066A	PMO-HOLDER DUAL UPPER, WHITE	1		WHITE(V STAND)
	JK72-21066B	PMO-HOLDER DUAL UPPER, BLACK			BLACK(V STAND)
I18	S600200006A	SCREW-TAPPING:M3,L8	3		
I19	S600200006A	SCREW-TAPPING:M3,L8	3		V STAND
I20	JK72-40004B	MEC-HINGE ASSY	2		
I21	JK75-40006A	MEC-HINGE ASSY	2		
I22	JK72-20604B	PMO-HOLDER DUMMY	1		
I23	S600300020A	SCREW-TAPTITE:M3,L10	4		
I24	S600200006A	SCREW-TAPPING:M3,L8	2		
I25	JK70-20452B	IPR-FRAME REAR MONITOR	1		V STAND
I26	S600100008A	SCREW-MACHINE:PWH,M3,L10	4		V STAND
I27	JK72-20907A	PMO-HOLDER DUAL	1		
I28	S600200028A	SCREW-TAPPING:M3,L6	1		
I29	JK39-60085A	HARNNESS-POWER	1		
I30	JK39-90014A	HARNNESS-VGA CABLE	1		
I31	JK39-80056A	HARNNESS-OSD	1		
I32	JK39-90009A	HARNNESS-IPEX	1		
I33	S600200005A	SCREW-TAPPING:M3,L10	2		
I34	S600600007A	SCREW-ASSY MACH: BH,M4,L8	2		V STAND

# Appendix B. System Configuration

## 05. Parts List

- 15inch Dual Monitor





## Appendix B. System Configuration

### 05. Parts List

NO	PART CODE	PARTS NAME	Q'TY	Serviceable	REMARK
J	QCD-STSL15NWB	15" DAUL MONITOR, WHITE	1		OPTION
	QCD-STSL15NBB	15" DAUL MONITOR, BLACK			
	QCD-STVL15NWB	15" DAUL MONITOR(V STAND), WHITE			
	QCD-STVL15NBB	15" DAUL MONITOR(V STAND), BLACK			
J1	JK72-20544A	PMO-FRONT DISPLAY	1		
J2	JK92-10008A	DAUL-OSD BOARD	1		
J3	JK72-20551	PMO-BRAND FRONT	1		OPTION
J4	JK72-20547A	PMO-BUTTON	1		
J5	JK73-20015A	RMO-WATER PROOF	1		
J6	JK95-70567A	LCD-LED:XTN,15"	1		
J7	S600100044A	SCREW-MACHINE:M3,L5	4		
J8	S600200005A	SCREW-TAPPING:M3,L10	12		
J9	JK95-70376D	ASSY-BRKT DISPLAY DUAL	1		
J10	JK95-70221B	UNIT AD BOARD	1		
J11	S600100016A	SCREW-MACHINE:M3,L4	4		
J12	JK68-40223A	LABEL(R)-DUAL DISPLAY	1		
J13	JK72-20546B	PMO-REAR BOTTOM	1		
J14	JK72-20552A	PMO-DUMMY MSR	1		OPTION
J15	JK72-20545	PMO-REAR TOP	1		
J16	S600100036A	SCREW-MACHINE HAND M3,L6	2		
J17	JK91-10044R	PRA-DUAL DISPLAY	1		
J18	S600100056A	SCREW-MACHINE HAND M3,L10	4		
J19	JK75-40019A	DUAL HINGE ASSY	1		STANDARD STAND
J20	S600100039A	SCREW-MACHINE:M4,L8	4		STANDARD STAND
J21	JK75-40016A	DUAL HINGE ASSY	1		V STAND
J22	S600100039A	SCREW-MACHINE:M4,L8	4		V STAND
J23	JK39-40792B	HARNESS-VGA CABLE	1		
J24	JK39-40791A	HARNESS-LCD POWER	1		
J25	JK39-40798A	HARNESS-LVDS	1		
J26	JK39-80018A	HARNESS-INVERTER	1		
J27	JK39-40876A	HARNESS-DUAL OSD	1		
J28	S600100039A	SCREW-MACHINE:PWH,M4,L8	2		STANDARD STAND
J29	JK70-20452B	IPR-FRAME REAR MONITOR	1		V STAND
J30	S600100008A	SCREW-MACHINE:FH,M3,L10	4		V STAND
J31	S600600007A	SCREW-ASSY MACH: BH,M4,L8	2		V STAND